

# Scotland's Climate Change Declaration

## 2013-14 Reporting Template

### Governance, Leadership and Management of Climate Change

#### Background Information

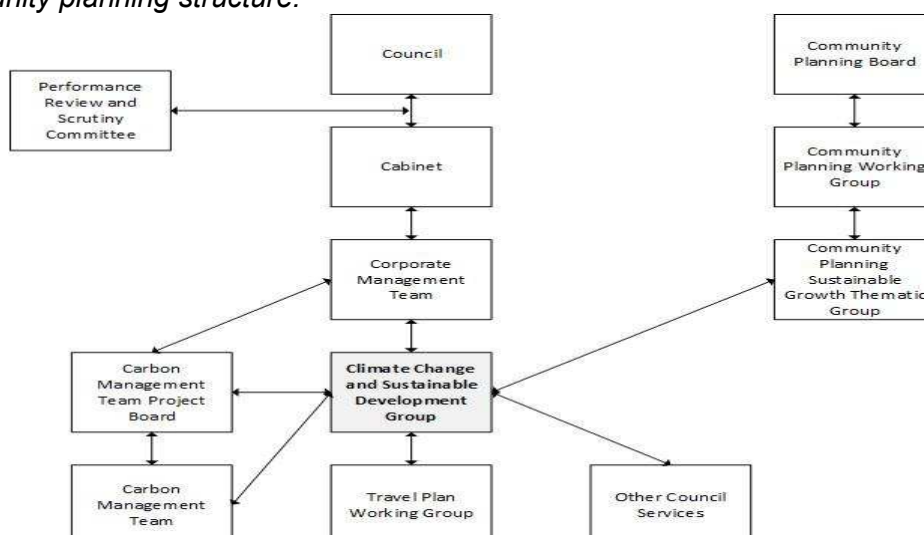
This section of the template is designed to provide background information on your local authority and to outline how you provide effective governance, leadership and management of climate change.

Local Authority Name	Midlothian Council
Number of Staff	4954 (3301 Perm.; 901 Casual; 511 Fixed Term; 241 Fixed Term Zero Hours)
Number of Council Operated Premises	230
Annual budget	£179,711,893

#### Governance

How is climate change governed in your local authority and what role do elected members provide? Please include a diagram to illustrate your Governance structure, including reference to any distinct climate change initiatives or groups in which elected members are particularly active.

*The cross-divisional Climate Change & Sustainable Development Group of officers reports to the Corporate Management Team and Cabinet in turn. Political leadership and responsibility lies with the Cabinet. The diagram here shows the principal groups and reporting lines, including the relationship with the community planning structure.*



Further information on the community planning structure is available at [www.midlothian.gov.uk/info/200130/communities\\_and\\_community\\_planning/367/community\\_planning](http://www.midlothian.gov.uk/info/200130/communities_and_community_planning/367/community_planning)

## Leadership

Please provide examples of leadership that senior staff or elected members have promoted that have led to emissions reduction, promoted awareness and action on climate change or support for adaptation initiatives.

*Councillor Owen Thompson, Council Leader, committed to taking part in the 'Tough Mudder' endurance course in the event of his local Earth Hour sign-ups target being reached. The target was reached and Councillor Thompson completed the course.*

*Councillor Jim Bryant, Cabinet Member for Economic Development, attended meetings of the COSLA Development, Economy & Sustainability Executive Group. Councillor Bryant also represented Midlothian as a winner at the Scottish National Renewables League awards.*

*Kenneth Lawrie, the Council's Chief Executive, lent his support to the Council's in-house energy campaign, 'Watts Going Down', including through the Council's staff newsletter.*

## Management

Provide detail and diagram of internal management decision-making structures, special arrangements for mitigation and/or adaptation management, allocation of responsibilities to senior staff, etc.

*At operational level, the cross-divisional Climate Change & Sustainable Development Group of officers drives the Council's approach to contributing to the achievement of sustainable development, including in respect of climate change. The group is chaired by the Communities & Economy service's Planning Policy & Environment Manager, a service within the Education, Communities & Economy Division. A Senior Planning Policy Officer within the Planning Policy & Environment team is lead officer for the group and climate change in general.*

*In terms of corporate greenhouse gases, a Senior Engineer within the Property & Facilities Management service was lead officer for the Carbon Management Plan (CMP) during the reporting period. The CMP Board comprises all Directors and the Head of Property & Facilities Management.*

*The diagram above provides details of relevant groups and reporting lines. Information on the Council structure is available at [www.midlothian.gov.uk/info/690/structure](http://www.midlothian.gov.uk/info/690/structure)*

## Improving Climate Change Governance, Leadership and Management

Provide details of plans to improve climate change governance, leadership and management arrangements e.g. creation of new groups, service improvement plans etc.

*The Council's annual Climate Change and Sustainable Development Action Plan sets out planned improvements in this regard. The 2014/15 plan proposes the further development of sustainable development indicators for potential inclusion in future service level performance reporting.*

*The remit of the Climate Change & Sustainable Development Group is to be expanded to address the 'biodiversity' duty under the Nature Conservation (Scotland) Act 2004.*

*The Senior Engineer post no longer features in the Council's establishment, and the future 'organisational fit' for carbon management planning remains to be determined.*

## Strategies, Plans and Programmes

Outline how climate change is incorporated into strategies, plans and programs, e.g. the Single Outcome Agreement, the Community Plan, the Council Corporate Plan, Service Plans, Structure and Local Development Plans, etc.

Please provide links to these documents and detail the specific sections or paragraphs where climate change is referenced.

*Midlothian's Single Outcome Agreement, the Single Midlothian Plan (SMP) 2013/14, sets out medium and long-term outcomes to reduce greenhouse gas emissions for which Midlothian is responsible and to adapt the area to the impacts of a changing climate. Tackling issues relating to climate change is a priority for the year 2013/14 agreed by partners, with actions for joint delivery agreed in relation to managing flood risk through action plans, Borders Rail and a food waste treatment facility.*

*The Council has made clear its commitment to and civic leadership role for community planning by ceasing to have a separate corporate strategy, instead agreeing to adopt the Single Midlothian Plan (and its priorities for the year in particular). In tackling issues relating to climate change in 2013/14, the Planning and Development Service Plan 2013-2018 commits to implementation and review of the annual Climate Change and Sustainable Development Action Plan; the Commercial Operations Service Plan 2013-18 commits to underpinning the SMP 2013/14 actions in relation to flood risk action planning, Borders Rail and food waste treatment arrangements.*

*The Council's Corporate Climate Change Strategy sets out arrangements for mainstreaming consideration of climate change.*

*The SESplan Strategic Development Plan for South East Scotland identifies climate change as a challenge driving its strategy. Contributing to the response to climate change through mitigation and adaptation and the promotion of high quality design/development is an aim of the plan, underpinning its spatial strategy.*

*Climate change mitigation and adaptation underpins the development strategy and policy framework of the adopted Midlothian Local Plan (2008).*

*The Single Midlothian Plan 2013/14 is available at [www.midlothian.gov.uk/downloads/file/3460/2013-14\\_single\\_midlothian\\_plan](http://www.midlothian.gov.uk/downloads/file/3460/2013-14_single_midlothian_plan)*

*The Midlothian Council Planning & Development Service Plan 2013-18 and Commercial Operations Service Plan 2013-18 are available at [www.midlothian.gov.uk/info/691/performance\\_and\\_spending/746/service\\_performance/10](http://www.midlothian.gov.uk/info/691/performance_and_spending/746/service_performance/10)*

*The Corporate Climate Change Strategy is available at [http://www.midlothian.gov.uk/download/meetings/id/3561/14ii\\_climate\\_change\\_strategy\\_report\\_to\\_cabinet\\_appendix\\_1](http://www.midlothian.gov.uk/download/meetings/id/3561/14ii_climate_change_strategy_report_to_cabinet_appendix_1)*

*The Strategic Development Plan is available at [www.sesplan.gov.uk](http://www.sesplan.gov.uk)  
The Midlothian Local Plan is available at [www.midlothian.gov.uk/info/198/planning\\_policy/489/midlothian\\_local\\_plan\\_2008](http://www.midlothian.gov.uk/info/198/planning_policy/489/midlothian_local_plan_2008)*

## Priorities for the Year Ahead

What are your key priorities for climate change Governance, Leadership and Management within your organisation?

*The Council's annual Climate Change and Sustainable Development Action Plan sets out planned improvements in this regard. The 2014/15 plan proposes the further development of sustainable development indicators for potential inclusion in future service level performance reporting.*

*The remit of the Climate Change & Sustainable Development Group is to be expanded to address the 'biodiversity' duty under the Nature Conservation (Scotland) Act 2004.*

*The Senior Engineer post no longer features in the Council's establishment, and the future 'organisational fit' for carbon management planning remains to be determined*

## Reducing Corporate Emissions

### Targets:

Please state whether your local authority has set targets for 'corporate' greenhouse gas emissions. If yes, please provide below:

#### Target and Document Source (please provide link)

*The Carbon Management Plan 2013/16 target is for a 25% tCO<sub>2</sub>e reduction by 2015/16 from a baseline year of 2006/7, i.e. from 35,354 tCO<sub>2</sub>e to 26,516 tCO<sub>2</sub>e. Emissions within the scope of the plan are those in the table below under 'Corporate Reporting – Further Information', but excluding emissions from business/staff travel (commute); and including water emissions and emissions associated with all waste handled by the Council. The plan is available at [www.midlothian.gov.uk/download/meetings/id/3868/12\\_carbon\\_management\\_plan\\_progress\\_report\\_2014](http://www.midlothian.gov.uk/download/meetings/id/3868/12_carbon_management_plan_progress_report_2014)*

*The Midlothian Council Travel Plan 2013/17 target is to reduce fleet and business travel emissions in accordance with such targets as set out in the Carbon Management Plan. Business travel is not currently within the scope of the Carbon Management Plan; and there is no specific target for fleet in the 2013/16 plan, fleet emissions being part of the basket of emissions categories subject to the single CMP target above. There is no emissions target for staff travel (commute) in the travel plan. The travel plan is available at [http://www.midlothian.gov.uk/info/1528/transport\\_policy/293/midlothian\\_council\\_travel\\_plan](http://www.midlothian.gov.uk/info/1528/transport_policy/293/midlothian_council_travel_plan)*

### Performance:

Progress against targets (total CO<sub>2</sub> tonnes) – please add/delete columns as appropriate

Baseline year	Total in 06-07 (tCO <sub>2</sub> e)	Total in 07-08 (tCO <sub>2</sub> e)	Total in 08-09 (tCO <sub>2</sub> e)	Total in 09-10 (tCO <sub>2</sub> e)	Total in 10-11 (tCO <sub>2</sub> e)	Total in 11-12 (tCO <sub>2</sub> e)	Total in 12-13 (tCO <sub>2</sub> e)	Total in 13-14 (tCO <sub>2</sub> e)
2006-7 (CMP 2013/16)	35,354	31,379	29,064	27,809	27,441	26,049	27,761	26,826
2012-13 (Staff travel (commute))	3,721	N/K	N/K	N/K	N/K	N/K	4,899	N/K

### Corporate Reporting – Further Information

Please complete the table below. Data in *italics* is optional. What are the boundaries of the data provided (e.g. local government estate?). The information below is for Council Estate Functions only.

For further information, please refer to the Scottish Government document – Public Sector Sustainability Reporting Guidance on the Preparation of Annual Sustainability Reports 2012-13 available [here](#).

Area	Performance (2013-14)	Target p.a. (if applicable)
(a) Total GHG emissions	32,689 tCO <sub>2</sub> e	
(b) Electricity	13,500 MWh	
(c) Gas	36,420 MWh	
(d) Street lighting	6,301 MWh	
(e) Staff travel (commute)	4,899 tCO <sub>2</sub> e (2012-13)	
(f) Fleet	2,161 tCO <sub>2</sub> e	
(g) Business travel	423 tCO <sub>2</sub> e ( <i>claimed for mileage; average car</i> )	
Carbon Reduction	17,213 tCO <sub>2</sub> e	



Commitment-related emissions		
CRC-related expenditure	£206,807	
Energy expenditure (gas and electricity)	£3,249,567	
(a) Total waste	47,749 tonnes	<i>Figures for all waste handled by the Council, including household.</i>
(b) Waste to landfill	25,988 tonnes	
(c) Waste recycled/reused	21,761 tonnes	
(d) Waste incinerated or energy from waste	0 tonnes	
Waste expenditure	£2,629,593	<i>Disposal cost for all waste handled by the Council, including household.</i>
Waste emissions	7,993 tCO <sub>2</sub> e	<i>Figure for all waste handled by the Council, including household.</i>
Water consumption	122,970 m <sup>3</sup>	
Water expenditure	£505,057	

## Biodiversity

A short commentary should be provided on action on biodiversity when performing your duty under the Nature Conservation (Scotland) Act 2004. Please detail any biodiversity achievements during 2013-14 and any targets to improve biodiversity.

Arrangements for Mainstreaming Consideration of Biodiversity Conservation: This is primarily addressed through the annual Corporate Climate Change & Sustainable Development Action Plan process; but also through application of the Council's Sustainability Impact Check, a Sustainable Development Section in service plans, and Strategic Environmental Assessment for plans and programmes.

Communications and Capacity Building: Promoted through the Council website, the Curriculum for Excellence; awareness raising and volunteer support through the Midlothian Ranger Service.

Actions taken to Improve Biodiversity Conservation: Managing countryside sites for people and wildlife, bringing woodland into active management, establishing wildflower meadows in schools and native wildflower grasslands across the county (now in excess of 30 hectares), maintaining the Local Biodiversity Sites system, developing the Midlothian Green Network and other promotion through development planning and development management.

Monitoring: Programmes for monitoring a variety of species and habitats, undertaken largely by volunteers and often facilitated through the Midlothian Ranger Service.

Achievements: Establishment of native wildflower grasslands may be one of the most significant changes to biodiversity in Midlothian's open spaces over the last 50 years; woodlands have received grant funding from the Forestry Commission to support biodiversity works; thousands of hours of contributions and criminal justice contributions have been realised through the Midlothian Ranger Service.

Targets: The Single Midlothian Plans 2013/14 and 2014/15 commit to Midlothian's biodiversity as an outcome area for improvement, with targets to improve by 2020. This is measured in terms of change in the hectareage of broadleaf/mixed woodland cover and the proportion of designated Local Biodiversity Sites under active management.

## Sustainable Procurement

Please complete the table below.

This information can be obtained from the most recent Flexible Framework self-assessment that would have been completed by the organisation as part of their annual Procurement Capability Assessment (PCA).

	Current Performance Level (Level 0-5)	Target (aspirational, date to be set)
People	2	3
Policy	2	3
Process	0	1
Suppliers	0	1
Monitoring and Reporting	1	2
Overall	N/A	N/A

Please provide a short commentary on any sustainable procurement achievements during 2013-14

*The Sustainable Procurement Policy and Action Plan were agreed in 2012 and continued to be implemented vigorously during 2013-14.*

## Action to Reduce your Corporate Emissions

- Please provide information on action to reduce emissions during **2013-14** including behaviour change initiatives.
- Please give details on how these initiatives were financed.
- If you have not delivered initiatives under these areas during **2013-14** then please leave blank.

Area	Initiatives	Financing	
Electricity	<ul style="list-style-type: none"> <li>• Implementation of the Carbon Management Plan 2013/16, including 'Watts Going Down' energy awareness campaign</li> </ul>	Council capital and revenue programmes	
Gas	<ul style="list-style-type: none"> <li>• Implementation of the Carbon Management Plan 2013/16</li> <li>• Monitoring gas consumption in buildings to identify and rectify faults</li> <li>• Preparing building management systems upgrade projects</li> </ul>		Also Central Energy Efficiency Fund
Street lighting	<ul style="list-style-type: none"> <li>• Implementation of the Carbon Management Plan 2013/16</li> </ul>		
Staff travel	<ul style="list-style-type: none"> <li>• Implementation of the Midlothian Council Travel Plan 2013/17, including behavioural change initiatives with the Healthy Working Lives group</li> </ul>		Also Cycling Scotland
Fleet	<ul style="list-style-type: none"> <li>• Implementation of the Carbon Management Plan 2013/16</li> <li>• Ensuring Council fleet orders for plant and vehicles are in line with Council policy</li> </ul>		

Waste	<ul style="list-style-type: none"> <li>Part development of a food waste facility and completion of an associated access road (Zero Waste Project)</li> </ul>		
Biodiversity	<ul style="list-style-type: none"> <li>Turning managed open space over to wildflower grassland</li> <li>Continuing reduction in peat use</li> </ul>		
Procurement	<ul style="list-style-type: none"> <li>Implementation of Sustainable Procurement Policy Action Plan</li> </ul>		

- What are your priorities for **2014-15**? If you do not have priorities under the areas stated for **2014-15** then please leave blank.

Area	Priorities for 2014-15
Electricity	<ul style="list-style-type: none"> <li>Continue to implement the Carbon Management Plan 2013/16</li> </ul>
Gas	<ul style="list-style-type: none"> <li>Continue to implement the Carbon Management Plan 2013/16</li> </ul>
Street lighting	<ul style="list-style-type: none"> <li>Continue to implement the Carbon Management Plan 2013/16</li> </ul>
Staff travel	<ul style="list-style-type: none"> <li>Continue to implement the Midlothian Council Travel Plan 2013/17</li> </ul>
Fleet	<ul style="list-style-type: none"> <li>Continue to implement the Carbon Management Plan 2013/16</li> <li>Ensure Council fleet orders for plant and vehicles are in line with Council policy</li> <li>Explore opportunities for shared fleet services with East Lothian Council and NHS Lothian</li> </ul>
Waste	<ul style="list-style-type: none"> <li>Progress the construction of the food waste facility as part of the Zero Waste Project</li> </ul>
Biodiversity	<ul style="list-style-type: none"> <li>Review of wildflower grassland programme</li> <li>Continue to reduce peat use</li> </ul>
Procurement	<ul style="list-style-type: none"> <li>Continue to implement the Sustainable Procurement Policy Action Plan</li> </ul>



## Reducing Area-wide Emissions

What are your total area-wide and per capita emissions? Please indicate emission amounts and unit of measurement (e.g. tCO<sub>2e</sub>) and years. Please provide information on the following components using data from the link provided below:

'Emissions within the Scope of Local Authorities for 2005-12' dataset

<https://www.gov.uk/government/publications/local-authority-emissions-estimates>

	2011 tCO <sub>2e</sub>	2010 tCO <sub>2e</sub>	2009 tCO <sub>2e</sub>	2008 tCO <sub>2e</sub>	2007 tCO <sub>2e</sub>
Total Emissions	450.2	504.7	478.3	520.8	519.8
Industry and Commercial	127.4	156.2	142.4	160.1	151.9
Domestic	175.4	199.3	184.3	205.0	204.6
Transport Total	147.3	149.2	151.6	155.7	163.3
Per Capita	5.4	6.1	5.8	6.4	6.5

### Local Data

Have you developed any local emissions data, please provide commentary in the box below. This can include any work to footprint area energy consumption, transport, waste etc.

N/A

### Targets:

Local Authority or other organisation/community group with Local Authority Area	Target including explanation of the reduction (% on what), timeframe (e.g. between 2005 and 2027), scope (e.g. direct, consumption) and exclusions (e.g. large industry)	Progress to date
Midlothian Community Planning Partnership	Single Outcome Agreement target (Single Midlothian Plan 2013-14) to reduce per capita emissions (see above) to 4.5 tonnes CO <sub>2e</sub> by 2020	See above

### Area wide Actions:

What is your local authority doing to reduce greenhouse gases from your local authority area? Please provide examples of initiatives under the following headings, If you do not have any action under any of these headings then please leave blank. Please make clear distinction between initiatives initiated in **2013-14** and earlier years.

Area	Action in 2013-14	Existing	New	Importance in reducing GHG. High, medium, low	Comment on LA role. Progress and success of measure (if known)
Energy	<i>Secured funding to replace T8 and T12 light fittings</i>		<input checked="" type="checkbox"/>	<i>Medium</i>	<i>Identified 17 schools with inefficient, old/obsolete light fittings. Calculated to save between 25%-33% of energy consumption for lighting.</i>
Homes and Communities	<i>Installed external wall insulation to 358 private homes and 168 social homes</i>		<input checked="" type="checkbox"/>	<i>Medium</i>	<i>Council lead. Expected to give a saving of 17,676tCO<sub>2</sub>e over lifetime of measures.</i>
Business	<i>Supported the Bright Green Business Partnership in helping to reduce energy consumption, etc.</i>	<input checked="" type="checkbox"/>		<i>Medium</i>	<i>Council has service level agreement with Bright Green Business Partnership. Three enterprises received support for energy saving in 2013/14. Three enterprises implemented environmental audits and energy-saving systems in 2013/14.</i>
Transport	<i>Supported Transport Scotland/ Network Rail to progress detailed design and construction of the Borders Railway</i>	<input checked="" type="checkbox"/>		<i>High</i>	<i>Successfully implemented.</i>
Waste & Resource Efficiency	<i>Part development of a food waste facility (Zero Waste Project)</i>	<input checked="" type="checkbox"/>		<i>High</i>	<i>Midlothian Council and City of Edinburgh Council joint project. Aluna Renewable Energy and BAM started on site.</i>
Rural Land Use					

## Priorities for the Year Ahead (2014-15)

Please provide priorities for the given areas for 2014-15. If you do not have action planned under the following areas then please leave blank.

Area	Action in 2014-15
Energy	<i>Implement programme of T8 and T12 light fittings.</i> <i>Roll out 'Watts Going Down' energy efficiency campaign to schools and school pupils.</i>
Homes and Communities	<i>Progress two further external wall insulation projects to solid-walled homes in Loanhead and Mayfield, amounting to some 130 private and 50 social homes.</i> <i>Progressing the Midlothian Local Development Plan through its formal representations and Public Examination phase towards adoption; the Proposed Plan sets out ambitious policies aimed at transitioning to a low carbon and zero waste community, including promotion of: renewable and low carbon energy technology, reduction in energy use, decentralised heat generation and sustainable waste management.</i>
Business	<i>Support the Bright Green Business Partnership in helping to reduce energy consumption, etc.</i>
Transport	<i>Support Transport Scotland/ Network Rail to progress the detailed design and construction of Borders Rail.</i> <i>Develop infrastructure incidental to the Borders Railway.</i> <i>Improve sustainable travel and transport opportunities within Midlothian; continue to work with regional and national partnerships in delivering key transport projects.</i>
Waste & Resource Efficiency	<i>Progress development of the food waste facility (Zero Waste Project).</i> <i>Increase public awareness of recycling, continue to work within schools and the wider community, attend events and publicise changes in service delivery.</i>
Rural land use	

## Climate Change Adaptation

This section of the template has been developed in conjunction with [Adaptation Scotland](#) to align with their 5 Steps to Managing your Climate Risks Guidance published in 2014.

### Climate Change Adaptation – Responsibility and Progress

Who is responsible for adaptation planning within your organisation and what progress has been made to date?

*The lead officer for the Climate Change and Sustainable Development Group (Senior Planning Policy Officer) is lead officer for climate change adaptation planning. The Council has achieved Levels 0 ('Getting Started') and 1 ('Public Commitment and Impacts Assessment') against former UK National Indicator 188.*

### Climate Change Adaptation Assessment – Current Situation

Have you assessed current climate-related threats and opportunities? Where possible, make reference to threats and opportunities relating to:

- Buildings and Infrastructure
- Society
- Natural Environment

*These have been assessed to some degree through the drafting of a Local Climate Impacts Profile. Further assessment will be carried out to achieve targets in relation to former UK National Indicator 188 set out in the Single Midlothian Plan 2014/15: 2014/15: Level 0 ('Getting Started'), Level 1 ('Public Commitment and Impacts Assessment' and Level 2 ('Comprehensive Risk Assessment'); 2015/16: Level 3 ('Comprehensive Action Plan'); 2016/17: Level 4 ('Implementation, monitoring and continuous review').*

### Climate Change Adaptation Assessment – Future Threats and Opportunities

Have you assessed future climate-related threats and opportunities? Where possible, make reference to threats and opportunities relating to:

- Buildings and Infrastructure
- Society
- Natural Environment

*Assessment will be carried out insofar as necessary to achieve targets in relation to former UK National Indicator 188 set out in the Single Midlothian Plan 2014/15: 2014/15: Level 0 ('Getting Started'), Level 1 ('Public Commitment and Impacts Assessment' and Level 2 ('Comprehensive Risk Assessment'); 2015/16: Level 3 ('Comprehensive Action Plan'); 2016/17: Level 4 ('Implementation, monitoring and continuous review').*

## Climate Change Adaptation – Risks

How is climate change risk embedded in your organisation? If not, how do you intend to make this business as usual?

*This will be embedded insofar as necessary to achieve targets in relation to former UK National Indicator 188 set out in the Single Midlothian Plan 2014/15: 2014/15: Level 0 ('Getting Started'), Level 1 ('Public Commitment and Impacts Assessment') and Level 2 ('Comprehensive Risk Assessment'); 2015/16: Level 3 ('Comprehensive Action Plan'); 2016/17: Level 4 ('Implementation, monitoring and continuous review').*

*In working to achieve the Single Midlothian Plan 2014/15 target, the Council's Climate Change & Sustainable Development Action Plan 2014/15 commits to taking forward essential actions as set out in the Adaptation Scotland guidance.*

## Climate Change Adaptation - Actions

What actions do you already have in place to manage current and future climate change threats and opportunities? Please provide details on:

- Buildings and Infrastructure
- Society
- Natural Environment
- *Flood risk action plans*
- *Strategic Flood Risk Appraisal in the context of the Midlothian Local Development Plan*
- *Planning requirements for Sustainable Drainage Systems and in relation to development in flood plains*

## Climate Change Adaptation – Next Steps

What further actions do you need to put in place to manage identified for current and future climate change threats and opportunities?

*Such further actions as may be identified in meeting the above Single Midlothian Plan 2014/15 adaptation targets.*

## Priorities for the coming year (2014-15)

What are your climate change adaptation priorities for the coming year?

*Achieving the adaptation targets set out in the Single Midlothian Plan 2014/15 and Climate Change & Sustainable Development Action Plan 2014/15.*

## Partnership Working, Communications and Capacity Building

### Climate Change Mitigation

Describe any partnership work on climate change, especially Community Planning Partnership initiatives conducted this year (**2013-14**) for Corporate and Area Wide emissions.

Please include diagrams to illustrate the structure of these partnerships.

Please provide an explanation of what the partnership initiatives have aimed to do, what action has happened and what plans for future work are in place

### Corporate Partnership Work

*Provided data to Edinburgh College on our use of electric vehicles for academic research purposes.*

### Area Wide Partnership Work

*Supported Transport Scotland/ Network Rail to progress the detailed design and construction of the Borders Railway.*

*Development of the Zero Waste Project between Midlothian Council and City of Edinburgh Council, including a food waste facility.*

### Climate Change Adaptation Partnerships

Are you working with your Community Planning Partnership, communities or other stakeholders to identify shared threats and opportunities, and implement actions?

*Flood risk action planning with partners.*

### Communications and Behaviour Change Initiatives

List and describe climate change communications undertaken by you and partners either internally or to the wider community during **2013-14**. Please explain who the target audiences for the communications were and whether these were generally climate change mitigation or adaptation focused.

Have you made use of the Scottish Government's Low Carbon Behaviour Framework and ISM tool? If yes, please detail how.

*Participated in Earth Hour, which is mitigation focussed. Target audiences were staff, schools and the wider community.*

*Kenneth Lawrie, the Council's Chief Executive, lent his support to the Council's in-house energy campaign, 'Watts Going Down', including in a piece in the Council's staff newsletter.*



## Capacity Building

List and describe any climate change training and learning initiatives that your local authority has undertaken internally and within the community during **2013-14**.

Outline any initiatives taken to integrate climate change training into other 'core' staff development functions.

*Climate change-related learning through Curriculum for Excellence and Eco-Schools.*

## Priorities for the Year Ahead (2014-15)

What are your climate change partnership working, capacity building and communications priorities for the year ahead?

*Progressing the Zero Waste Project between Midlothian Council and City of Edinburgh Council, involving development of the food waste facility.*

*Climate change-related learning through the Curriculum for Excellence and Eco-Schools.*

*Earth Hour 2015.*

*Progressing the Midlothian Local Development Plan through its formal representations and Public Examination phase towards adoption; the Proposed Plan sets out ambitious policies aimed at transitioning to a low carbon and zero waste community, including promotion of: renewable and low carbon energy technology, reduction in energy use, decentralised heat generation and sustainable waste management. These policy initiatives will be subject to consultation with community planning partners, key agencies, developers and the public through the publication of the Proposed Plan; this will raise awareness of the climate change challenges for Midlothian across a wide range of partners and stakeholders.*