

Midlothian HSCP MSG Indicators

Performance from April 2019 to Sept 2023,
with 2020/21 MSG targets and trends

Local Intelligence Support Team (LIST),
Dec 2023

Contents

1. Methodology
2. Data completeness
3. Data Sources
4. A&E attendances
5. Emergency admissions
6. Unplanned bed days (Acute)
5. Delayed discharges occupied bed days

2020/21 MSG Targets - Methodology

- The MSG Objectives Performa was submitted in February 2020 which specified the 2020/21 targets and an action plan on how those targets were to be achieved
- 2017/18 MSG data was used as the baseline to calculate the 2020/21 targets

Data completeness

Source: MSG data release Dec-23, PHS

| Indicator | Published until | Provisional until | Data completeness issues |
|---|-----------------|-------------------|---|
| 1. A&E attendances | Sep-23 | n/a | - |
| 2. Emergency admissions | Jun-23 | Sep-23 | (SMR01) Sep-23 = 51% |
| 3a. Unplanned bed days (acute) | Mar-23 | Sep-23 | (SMR01) Sep-23 = 51% |
| 3b. Unplanned bed days (GLS) | n/a | Jun-23 | (SMR01E) Quarters ending:Dec-22 = 93%; Mar-23=91%; Jun-23 = 97%; Sep-23 = 83% |
| 3c. Unplanned bed days (MH) | Mar-22 | Sep-23 | |
| 4. Delayed discharges occupied bed days | Sep-23 | n/a | - |
| 5. Last 6 months of life (% in community setting) | 2020/21 | 2021/22 | - |
| 6. Balance of care (% at home) | n/a | 2021/22 | - |

Data Sources

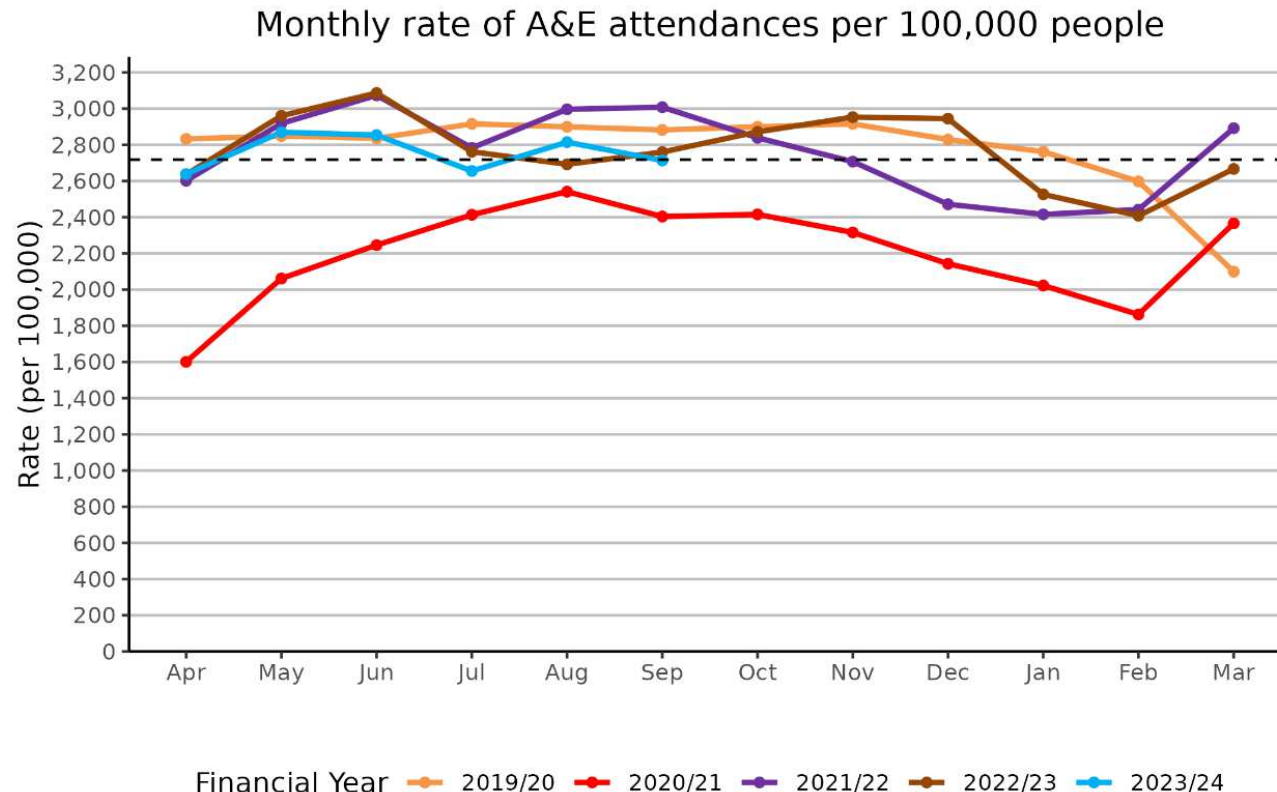
2020/21 MSG Targets

- Source: MSG data release v1.65, Dec-23; Public Health Scotland
- These are official monthly figures released by PHS and will be nationally published (some data is provisional and not yet published)
- Next data release: Mar-24

A&E Attendances

Source: MSG data release Dec-23;
data published up to Sep-23

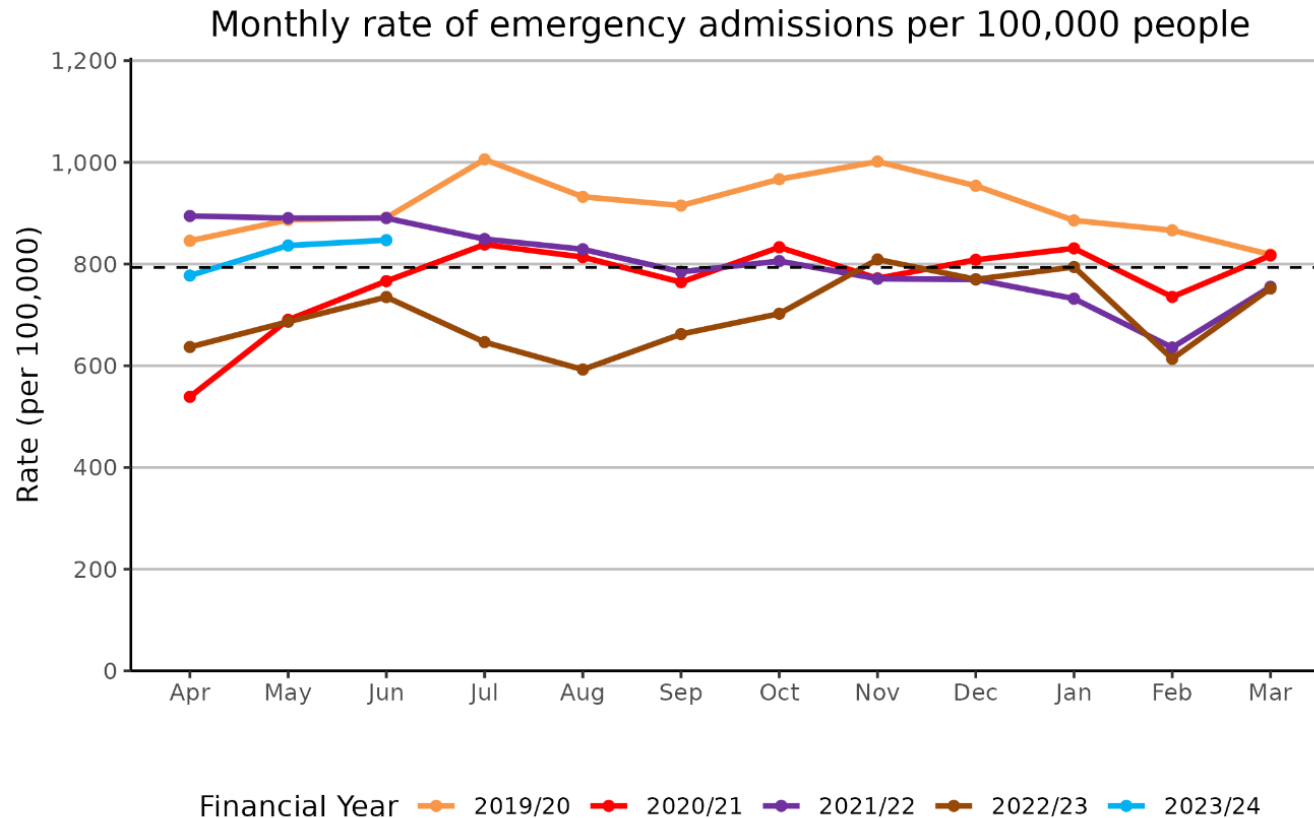
| Year | Annual | Monthly |
|-----------------------------------|--------|---------|
| 2020/21 Target Rate (per 100,000) | 32,614 | 2,718 |
| 2019/20 Rate (per 100,000) | 33,319 | 2,777 |
| 2020/21 Rate (per 100,000) | 26,391 | 2,199 |
| 2021/22 Rate (per 100,000) | 33,147 | 2,762 |
| 2022/23 Rate (per 100,000) | 33,268 | 2,772 |
| 2023/24 Running Average (Sep) | | 2,758 |



Emergency Admissions

Source: MSG data release Dec-23;
data published up to Jun-23

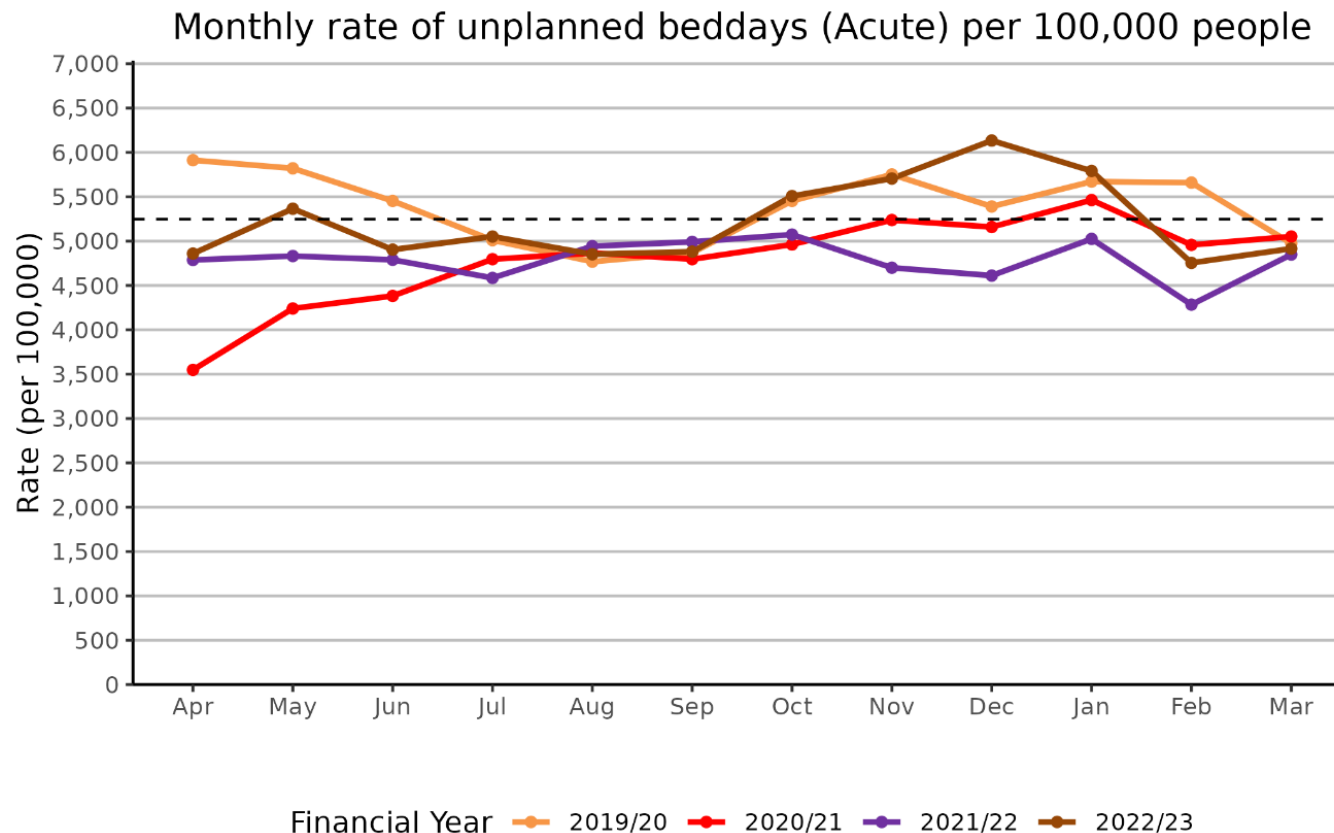
| Year | Annual | Monthly |
|-----------------------------------|--------|---------|
| 2020/21 Target Rate (per 100,000) | 9,520 | 793 |
| 2019/20 Rate (per 100,000) | 10,970 | 914 |
| 2020/21 Rate (per 100,000) | 9,209 | 767 |
| 2021/22 Rate (per 100,000) | 9,608 | 801 |
| 2022/23 Rate (per 100,000) | 8,401 | 700 |
| 2023/24 Running Average (Jun) | | 820 |



Unplanned Bed Days - Acute

Source: MSG data release Dec-23;
data published up to Mar-23

| Year | Annual | Monthly |
|-----------------------------------|--------|---------|
| 2020/21 Target Rate (per 100,000) | 62,963 | 5,247 |
| 2019/20 Rate (per 100,000) | 64,736 | 5,395 |
| 2020/21 Rate (per 100,000) | 57,461 | 4,788 |
| 2021/22 Rate (per 100,000) | 57,473 | 4,789 |
| 2022/23 Rate (per 100,000) | 62,723 | 5,227 |

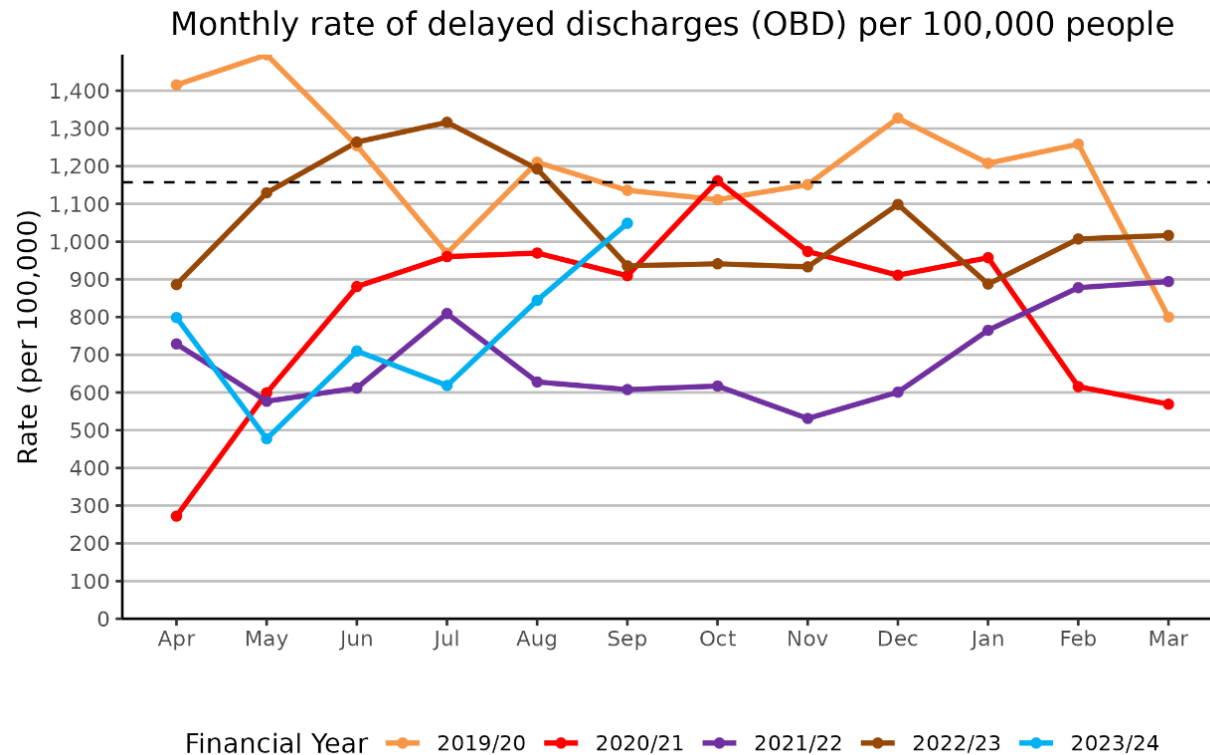


Delayed Discharges

Occupied Bed Days (18+)

Source: MSG data release Dec-23;
data published up to Sep-23

| Year | Annual | Monthly |
|-----------------------------------|--------|---------|
| 2020/21 Target Rate (per 100,000) | 13,886 | 1,157 |
| 2019/20 Rate (per 100,000) | 14,336 | 1,195 |
| 2020/21 Rate (per 100,000) | 9,779 | 815 |
| 2021/22 Rate (per 100,000) | 8,249 | 687 |
| 2022/23 Rate (per 100,000) | 12,608 | 1,051 |
| 2023/24 Running Average (Sep) | | 750 |



End of Life - Percentage of Last Six Months Spent in Large Hospitals

Source: MSG data
release Dec-23;
data published up
to 2020/21

| Year | Annual |
|----------------|--------|
| 2020/21 Target | 8.7% |
| 2019/2020 | 9.1% |
| 2020/2021 | 7.5% |

