

Midlothian HSCP MSG Indicators

Performance from April 2019 to December 2022, with 2020/21 MSG targets and trends

Local Intelligence Support Team (LIST),
May 2023

Data completeness

Source: MSG data release Mar-23, PHS

Indicator	Published until	Provisional until	Data completeness issues
1. A&E attendances	Dec-22	n/a	-
2. Emergency admissions	Mar-22	Dec-22	(SMR01) Nov-20 = 93%, Nov-21 = 95%, Nov-22=89%
3a. Unplanned bed days (acute)	Mar-22	Dec-22	(SMR01) Nov-20 = 93%, Nov-21 = 95%, Nov-22=89%
3b. Unplanned bed days (GLS)	n/a	Dec-22	(SMR01E) Quarters ending: Mar-22 = 98%; Jun-22 = 92%; Sep-22 = 96%; Dec-22 = 91%
3c. Unplanned bed days (MH)	Mar-21	Dec-22	(SMR04) Quarters ending: Jun-22 = 91%
4. Delayed discharges occupied bed days	Dec-22	n/a	-
5. Last 6 months of life (% in community setting)	2020/21	2021/22	-
6. Balance of care (% at home)	n/a	2020/21	-

2020/21 targets and actuals

Source: MSG objectives 2020-21 template - Midlothian IJB; MSG data release Mar-23, PHS

Indicator	2020/21 target	2020/21 target (rate per 100,000)		2020/21 (rate per 100,000)		Target met
		Annual	Monthly	Annual	Monthly	
1. A&E attendances	Maintain	31,543	2,629	26,391	2,199	✓
2. Emergency admissions	5% decrease	9,207	767	9,208	767	✓
3a. Unplanned bed days (acute)	10% decrease	60,888	5,074	57,459	4,788	✓
3b. Unplanned bed days (GLS)	Decrease	<13,733	<1,144	14,122 (p)	1,177 (p)	X
3c. Unplanned bed days (MH)	Decrease	<15,910	<1,326	12,932	1,078	✓
4. Delayed discharges occupied bed days	20% decrease	9,836	820	9,779	815	✓
5. Last 6 months of life (% in large hospital)	Decrease	<8.7%	-	7.9%	-	✓
6. Balance of care (% at home)	Increase	>96.4%	-	97.%	-	✓

(p) = provisional

- Indicators 3b and 6 are still provisional.

Data Sources

2020/21 MSG Targets

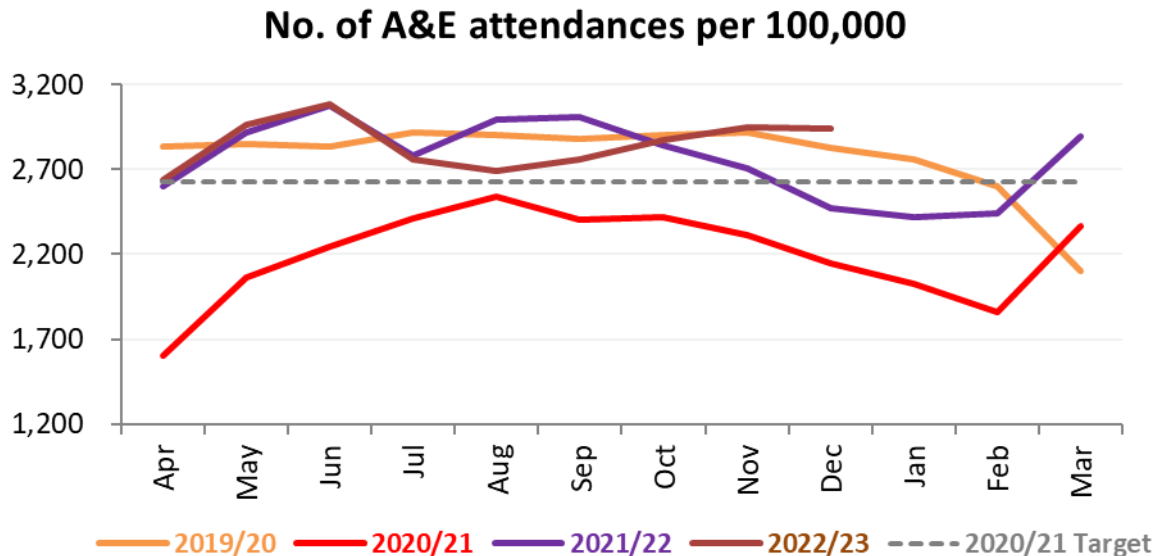
- Source: MSG data release v1.62, Mar-23; Public Health Scotland
- These are official monthly figures released by PHS and will be nationally published (some data is provisional and not yet published)
- Next data release: ?Jun-23

A&E Attendances

Source: MSG data release Mar-23; data published up to Dec-22

Target = maintain	Annual	Monthly
2020/21 Target Rate (per 100,000)	31,543	2,629
2019/20 Rate (per 100,000)	33,319	2,777
2020/21 Rate (per 100,000)	26,391	2,199
2021/22 Rate (per 100,000)	33,153	2,763
2022/23 Running average (Dec)		2,851

- The 2020/21 target was met
- The rate of attendances in 2020/21 was 21% lower than 2019/20, and **17% lower than the 2017/18 baseline year**. Much of this may be due to covid-19.
- The rate of attendances had increased back to typical levels by Aug-20, but steadily decreased again until Mar-21 when it started increasing.
- From May-21 – Nov-21 it exceeded the 2020/21 target level. Between Dec-21 and Feb-22 it dipped below the target again.

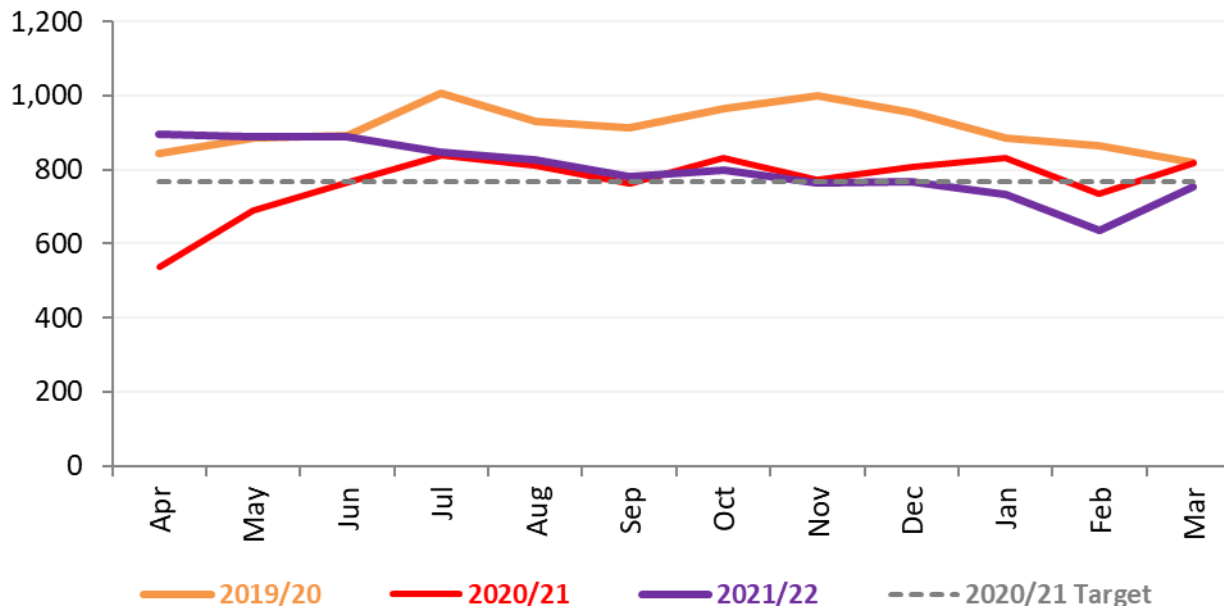


Emergency Admissions

Source: MSG data release Mar-23; data published up to Mar-22

Target = 5% decrease	Annual	Monthly
2020/21 Target Rate (per 100,000)	9,207	767
2019/20 Rate (per 100,000)	10,969	914
2020/21 Rate (per 100,000)	9,208	767
2021/22 Rate (per 100,000)	9,586	799

Number of emergency admissions per 100,000



- The 2020/21 target was met
- The rate of emergency admissions dropped in Apr-20 due to Covid-19, but quickly returned to more typical levels – although remained lower than 2019/20 until March-21
- In the first quarter of 2021/22 the admissions rate increased above the 2020/21 target level and above 2020/21 levels; this discrepancy has reduced since

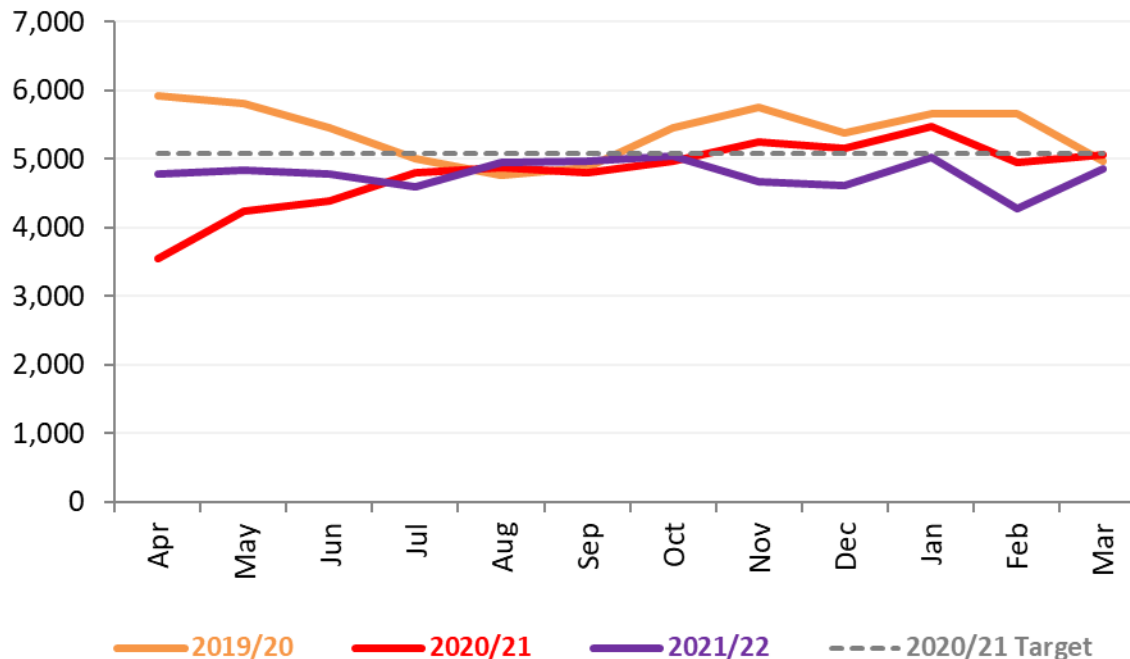
Unplanned Bed Days - Acute

Source: MSG data release Mar-23; data published up to Mar-22

Target = 10% decrease	Annual	Monthly
2020/21 Target Rate (per 100,000)	60,888	5,074
2019/20 Rate (per 100,000)	64,683	5,390
2020/21 Rate (per 100,000)	57,459	4,788
2021/22 Rate (per 100,000)	57,351	4,779

- The 2020/21 target was met
- The rate dropped drastically in Apr-20 due to Covid-19, but was back to a more typical level by Jul-20.
- The rate has remained stable since then

Acute unscheduled bed days per 100,000



Delayed Discharges Occupied Bed Days

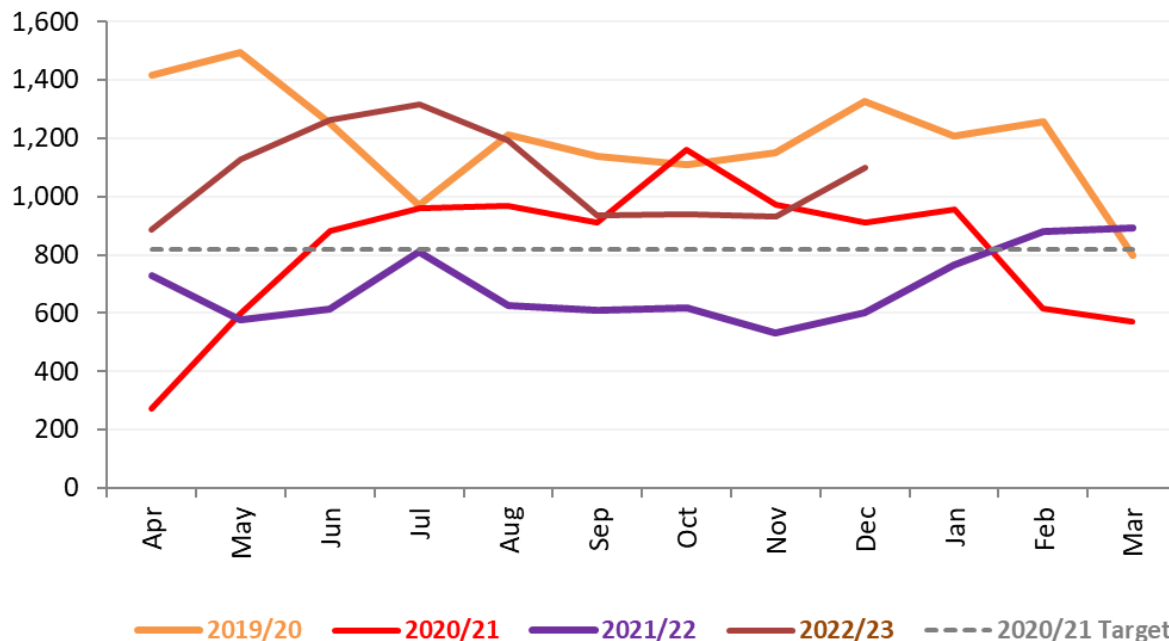
Source: MSG data release Mar-23; data published up to Dec-22

Target = 20% decrease	Annual	Monthly
2020/21 Target Rate (per 100,000)	9,836	820
2019/20 Rate (per 100,000)	14,336	1,195
2020/21 Rate (per 100,000)	9,779	815
2021/22 Rate (per 100,000)	8,249	687
2022/23 Running average (Dec)		1,077

- The 2020/21 target was met

- The rate of delayed discharge occupied bed days in Apr-20 was about 80% lower than the previous April's rate due to Covid-19

Delayed discharge bed days per 100,000, all reasons (18+)



- The rate has remained mostly lower than the previous year ever since; during much of 2021/22 it was lower than the 2020/21 target level, although it has now exceeded it since Feb-22 and has risen substantially over the last few months

End of Life - Percentage of Last Six Months Spent in Large Hospitals

Source: MSG data release Mar-23; data published up to 2020/21

Target = decrease	Annual
2020/21 Target	<8.7%
2019/20	9.1%
2020/21	7.5%

- The 2020/21 target was met
- The provisional percentage for 2021/22 is below the target but is higher than the 2020/21 level

