

Midlothian HSCP MSG Indicators

Performance from April 2019 to June 2024,
with 2020/21 MSG targets and trends

Local Intelligence Support Team (LIST),
September 2024

Data completeness

Source: MSG data release Sep-24, PHS

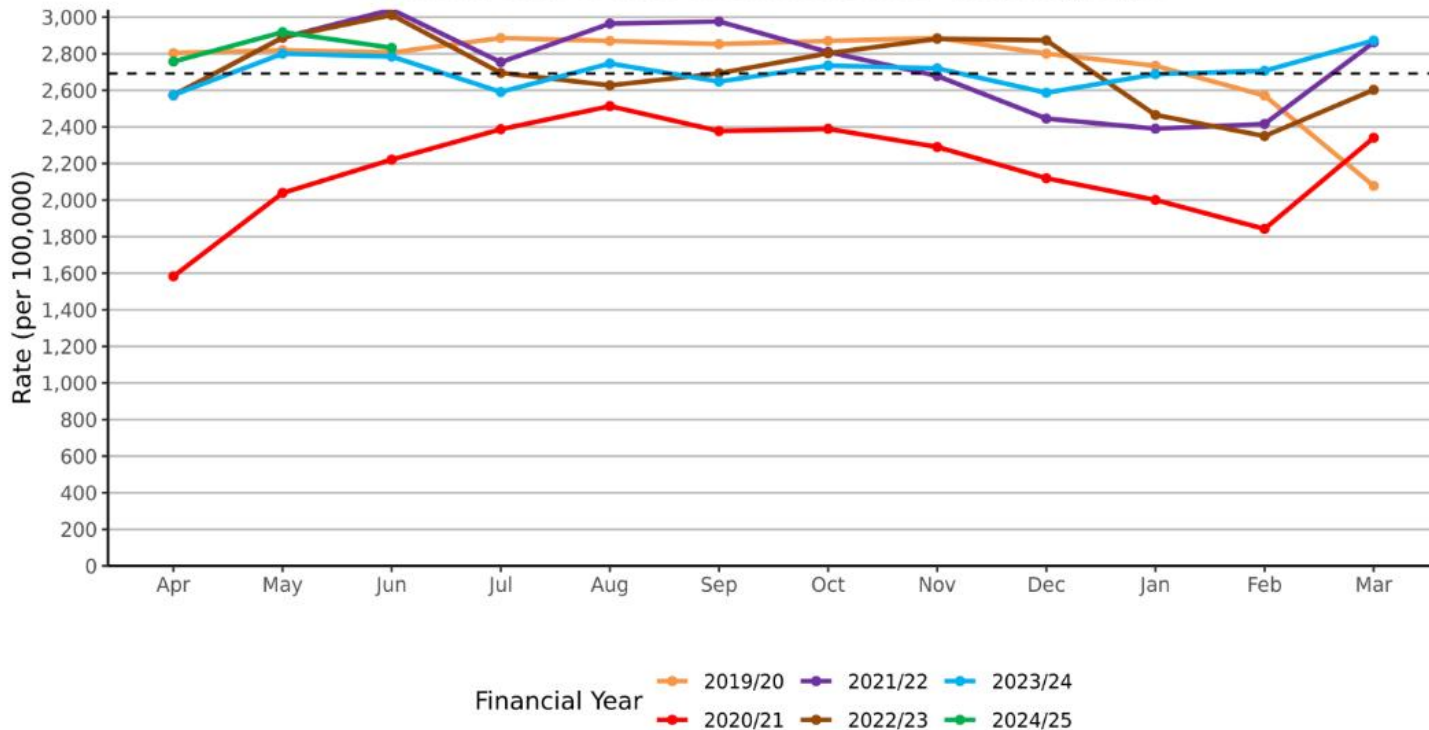
Indicator	Published until	Provisional until	Data completeness issues
1. A&E attendances	Jun-24	n/a	
2. Emergency admissions	Dec-23	Jun-24	(SMR01) Mar-24=96%; Jun-24=80%
3a. Unplanned bed days (acute)	Dec-23	Jun-24	(SMR01) Mar-24=96%; Jun-24=80%
4. Delayed discharges occupied bed days	Jun-24	n/a	
5. Last 6 months of life (% in community setting)	2021/22	2022/23	

A&E Attendances

Source: MSG data release Sep-24; data published up to Jun-24

Year	Annual	Monthly
2020/21 Target Rate (per 100,000)	32,299	2,692
2019/20 Rate (per 100,000)	32,977	2,748
2020/21 Rate (per 100,000)	26,102	2,175
2021/22 Rate (per 100,000)	32,798	2,733
2022/23 Rate (per 100,000)	32,462	2,705
2023/24 Rate (per 100,000)	32,453	2,704
2024/25 Running Average (Jun)		2,836

Monthly rate of A&E attendances per 100,000 people

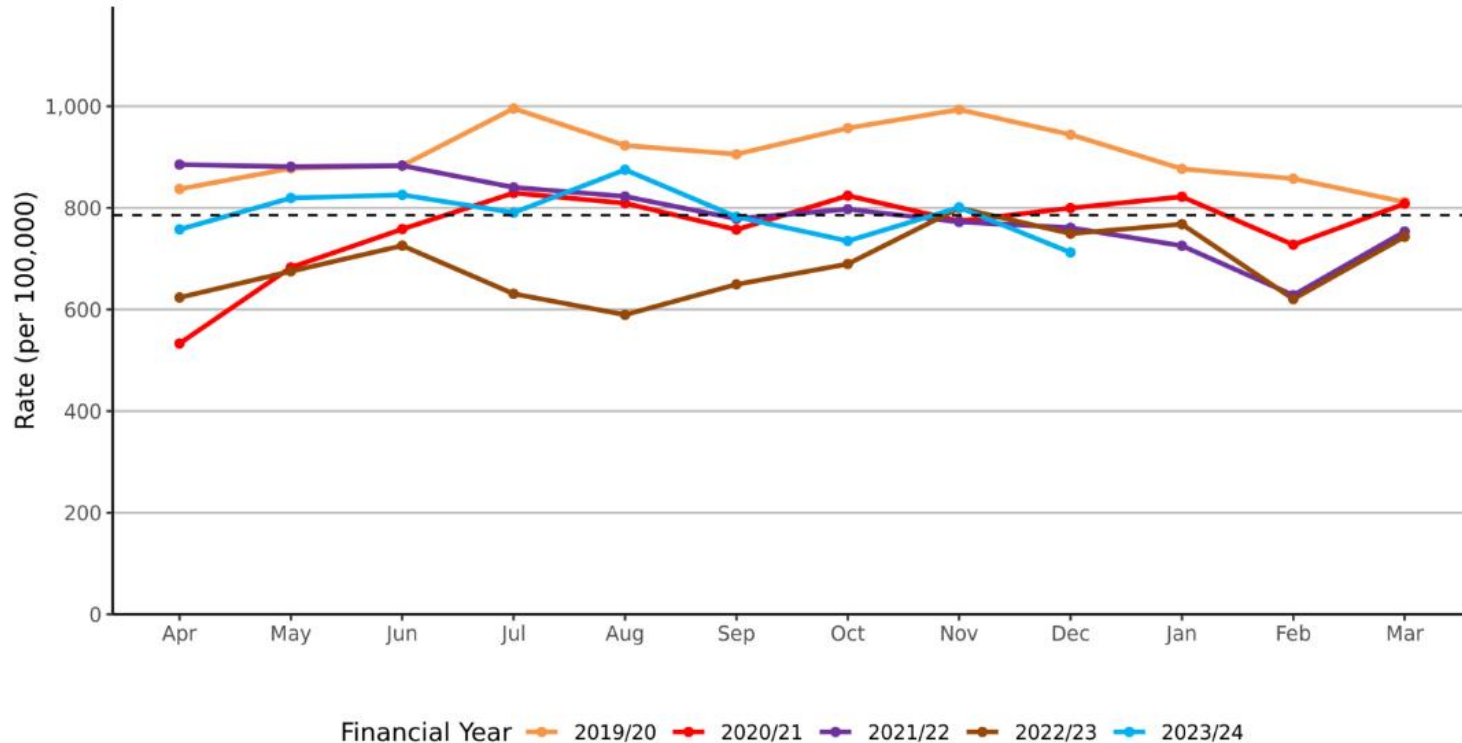


Emergency Admissions

Source: MSG data release Sep-24; data published up to Dec-23

Year	Annual	Monthly
2020/21 Target Rate (per 100,000)	9,428	786
2019/20 Rate (per 100,000)	10,862	905
2020/21 Rate (per 100,000)	9,124	760
2021/22 Rate (per 100,000)	9,528	794
2022/23 Rate (per 100,000)	8,263	689
2023/24 Running Average (Dec)		789

Monthly rate of emergency admissions per 100,000 people

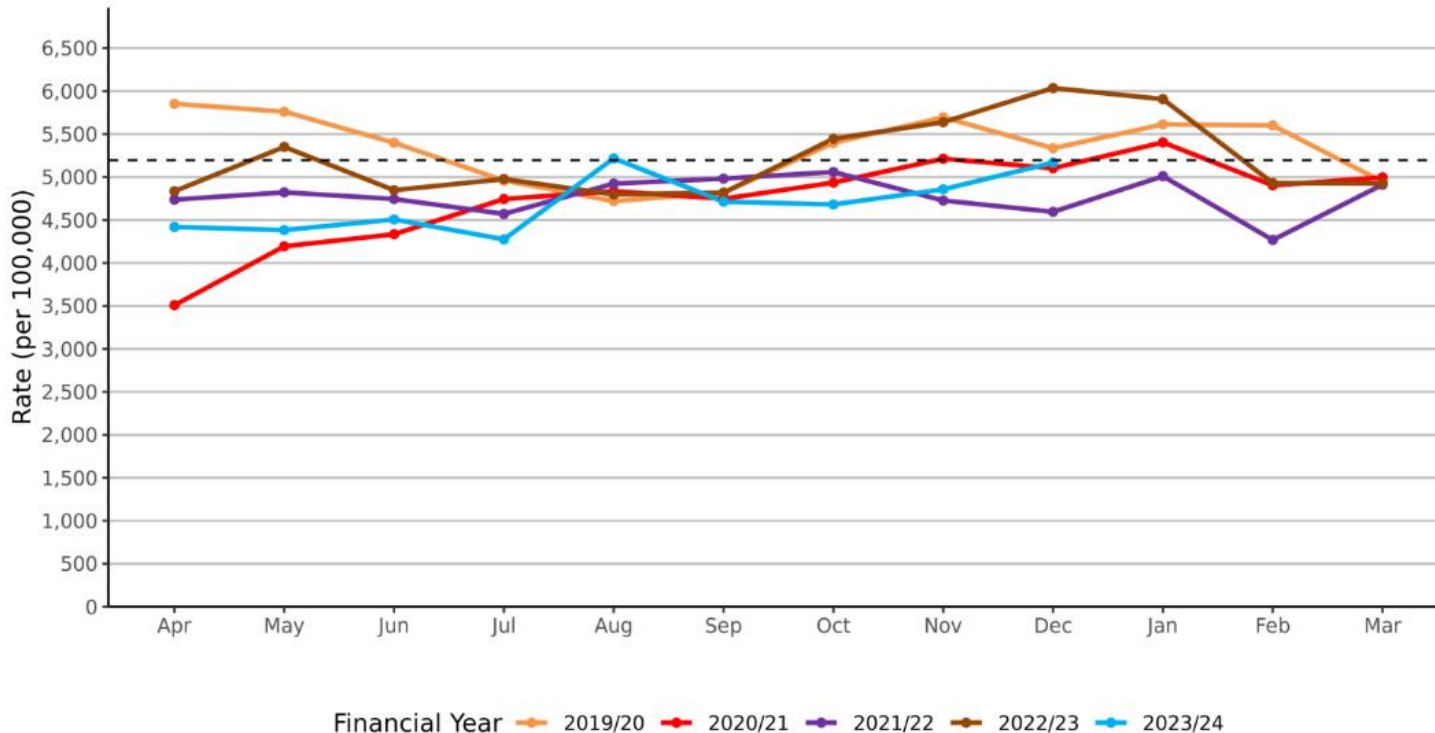


Unplanned Bed Days - Acute

Source: MSG data release Sep-24; data published up to Dec-23

Year	Annual	Monthly
2020/21 Target Rate (per 100,000)	62,354	5,196
<i>2019/20 Rate (per 100,000)</i>	<i>64,099</i>	<i>5,342</i>
<i>2020/21 Rate (per 100,000)</i>	<i>56,920</i>	<i>4,743</i>
<i>2021/22 Rate (per 100,000)</i>	<i>57,351</i>	<i>4,779</i>
<i>2022/23 Rate (per 100,000)</i>	<i>62,509</i>	<i>5,209</i>
<i>2023/24 Running Average (Dec)</i>		<i>4,691.3</i>

Monthly rate of unplanned beddays (Acute) per 100,000 people

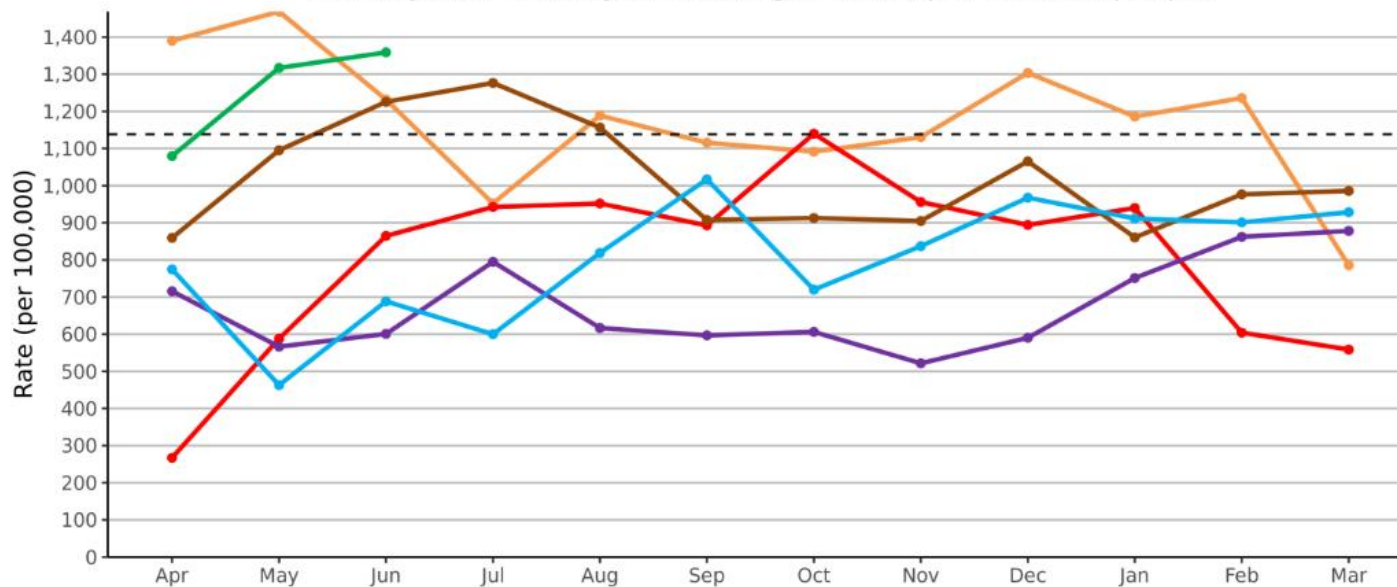


Delayed Discharges Occupied Bed Days (18+)

Source: MSG data release Sep-24; data published up to Jun-24

Year	Annual	Monthly
2020/21 Target Rate (per 100,000 18+)	13,662	1,138
2019/20 Rate (per 100,000)	14,079	1,173
2020/21 Rate (per 100,000)	9,599	800
2021/22 Rate (per 100,000)	8,101	675
2022/23 Rate (per 100,000)	12,227	1,019
2023/24 Rate (per 100,000)	9,627	802
2024/25 Running Average (Jun)		1,252

Monthly rate of delayed discharges (OBD) per 100,000 people

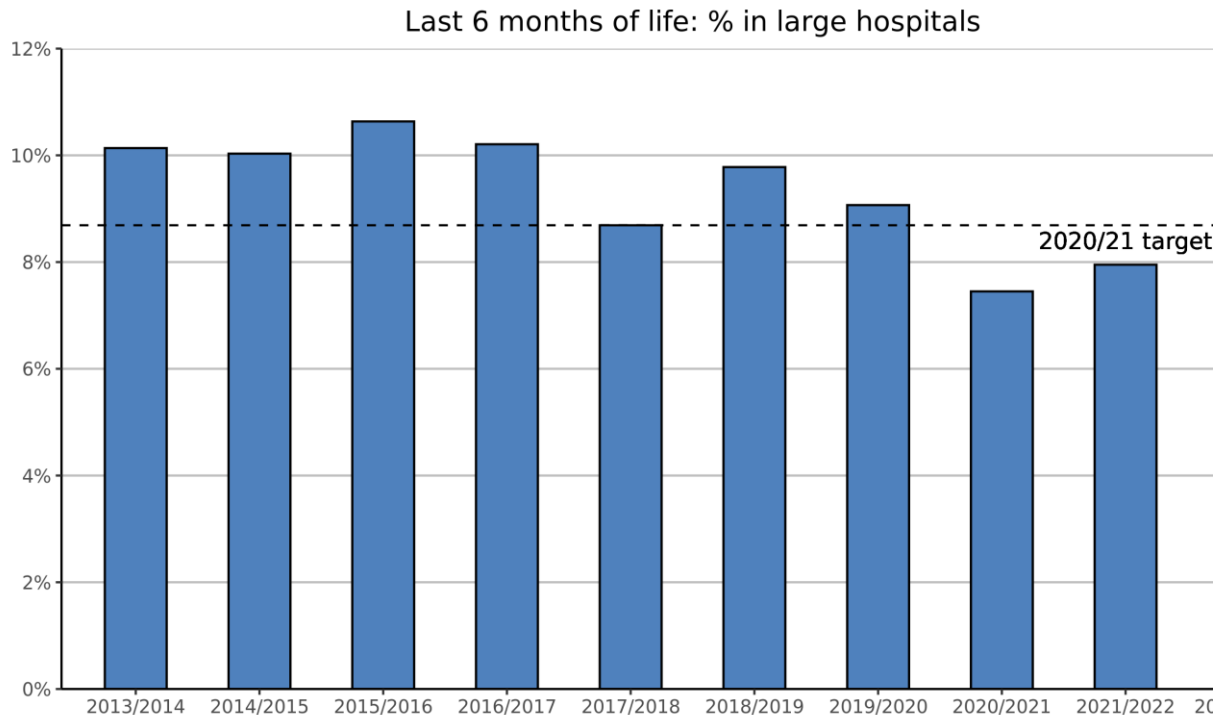


Financial Year
 2019/20 2021/22 2023/24
 2020/21 2022/23 2024/25

End of Life - Percentage of Last Six Months Spent in Large Hospitals

Source: MSG data release Sep-24; data published up to 2021/22

Year	Annual
2020/21 Target	<8.7%
2019/2020	9.1%
2020/2021	7.5%
2021/2022	8%



End of Life - Percentage of Last Six Months Spent in the Community – by calendar year

Source: MSG data release Sep-24; data published up to 2022

Year	Annual
2019	9.3%
2020	7.5%
2021	8.2%
2022	8.3%

