



Midlothian Council

Children, Young People and Partnerships Directorate

Statutory School Consultation

THIS IS A PROPOSAL DOCUMENT

This consultation is on the following proposal:

Proposed discontinuation of primary education provision at St Margaret's RC Primary School with effect from 1 July 2022.

Subject to the outcome of this consultation exercise:

- The provision of primary education at St Margaret's RC Primary School will be discontinued from 1 July 2022
- The catchment areas of St Mary's, St Matthew's and Sacred Heart RC Primary Schools will be extended to include the St Margaret's catchment area
- Remaining pupils will be allocated a place at St Mary's RC Primary School or they can choose to attend their non-denominational catchment primary school.
- School transport will be provided for all children affected, where there is no safe walking route to school and/or the distance from home to school is more than two miles
- Provision of Early Learning and Childcare will continue as per current arrangements

The following schools are directly affected by this proposal:

- St Margaret's RC Primary School
- St Mary's RC Primary School
- St Matthew's RC Primary School
- Sacred Heart RC Primary School

The following schools are indirectly affected by the proposal:

- St David's RC High School
- Loanhead Primary School

In accordance with the *Schools (Consultation) (Scotland) Act 2010*, Midlothian Council wants to hear your views on the proposal to discontinue primary education provision at St Margaret's RC Primary School with effect from 1 July 2022.

Within this consultation paper you will find information about the proposal, the reasons behind it, its likely impact and how you can tell us what you think about it. A short questionnaire is included within the proposal.

Midlothian Council hopes that as many of you as possible will complete the questionnaire and would like to thank you in advance for taking the time to share your views as they are extremely important to us.

We would like to be as open as possible with the results of this consultation so please note that your response will be anonymised and made public at the end of the consultation period. You may wish to ensure that you do not give any identifying details in your response. If you don't wish your response to be made public, you can specify this in the questionnaire and within any written response.

Distribution

A copy of this document is available on the Midlothian Council website:
www.midlothian.gov.uk/stmargarets

A summary of this document will be provided to:

- The Parent Councils of the affected schools
- The parents of the pupils at the affected schools
- Parents of children expected to attend an affected school within 2 years of the date of publication of this Proposal Document
- The pupils, deemed to be of suitable age and maturity to be able to communicate a view on the proposal, at the affected schools
- The teaching and ancillary staff at the affected schools
- The trade unions representatives of the above staff
- Representatives of the Roman Catholic Church
- Midlothian Councillors and Church Representatives of the Council
- Community Council of Loanhead and District, Community Council of Damhead and District, Community Council of Roslin and Bilston
- Community Planning Partnership
- Relevant users of the affected schools
- Constituency MP and MSP
- Education Scotland

A copy of this document is also available from:

- St Margaret's RC Primary School, 36 Edgefield Road, Loanhead, EH20 9DY
- St Mary's RC Primary School, Rosewell Road, Bonnyrigg, EH19 3HL
- St Matthew's RC Primary School, 32 Carnethie Street, Rosewell, EH24 9AT
- Sacred Heart RC Primary School, Crockett Gardens, Penicuik, EH26 9BB
- St David's RC High School, 1 Cousland Road, Dalkeith, EH22 2PS
- Loanhead Library, The Loanhead Centre, George Avenue, Loanhead, EH20 9LA

This document can be made available in alternative formats or in translated form for readers whose first language is not English.

If you would like this document in another language or format, or if you require the services of an interpreter, please call 0131 270 7500 or email: enquiries@midlothian.gov.uk

To be taken into consideration, responses to the consultation must be received by **16/11/2021**. These can be made electronically through the online consultation questionnaire at EducationConsultation@midlothian.gov.uk.

Written responses can be returned to:

St Margaret's Consultation, Freepost SCO 622, Midlothian Council, Dalkeith EH22 1DN

The affected consultees are:

The pupils attending St Margaret's RC Primary School

The pupils attending St Mary's, St Matthew's and Sacred Heart RC Primary Schools

The Parent Council of St Margaret's RC Primary School

The Parent Councils of St Mary's, St Matthew's and Sacred Heart RC Primary Schools

The parents / carers of pupils and children expected to attend St Margaret's, St Mary's, St Matthew's and Sacred Heart RC Primary Schools within two years of the date of publication of the proposal paper

The staff employed by the Council and based at St Margaret's, St Mary's, St Matthew's and Sacred Heart RC Primary Schools

The Trade Union and Professional Associations Representatives of the above staff

The Community Councils of Loanhead and District, Damhead and District, and Roslin and Bilston

Community Planning Partnership

Other users of St Margaret's RC Primary School

INDEX	Page No.
Section A: Summary of Process for this Proposal Document	4
Section B: Proposal for Consultation	8
Section C: Educational Benefits Statement	13
Section D: Consideration of Alternative Options and Other Implications	18
Section E: Conclusion	21
Appendix 1: St Margaret's Consultation and Scottish Ministers Call-In Process Timeline	22
Appendix 2: Catchment Map	23
Appendix 3 Denominational Review	24
Appendix 4: Financial Analysis	25
Appendix 5: St Margaret's Consultation Response Form	27

Section A: Summary of Process for this Proposal Document

Schools (Consultation) (Scotland) Act 2010

1. The Council has a number of statutory duties relating to the provision of education in its area including the statutory consultation that must be undertaken when proposing a permanent change to any of their schools, including Nursery Schools, such as closure, relocation or change of catchment area. The *Schools (Consultation) (Scotland) Act 2010* principle purpose is:
“to provide strong, accountable statutory consultation practices and procedures that local authorities must apply to their handling of all proposals for school closures and other major changes to schools.”
2. This Proposal Document has been prepared in accordance with the Schools (Consultation) (Scotland) Act 2010, having regard to the statutory guidance published by the Scottish Government on 14 May 2015, both of which are available for reference at the following websites:

Schools (Consultation) (Scotland) Act 2010:

<http://www.legislation.gov.uk/asp/2010/2/contents>

Statutory Guidance (14 May 2015):

<http://www.gov.scot/Publications/2015/05/4615>

3. The process for consultation, summarised in this section, details how the Council is undertaking this consultation.

Consideration by Council

4. The Education (Scotland) Act 1980 places a legislative duty on the Council to ensure the adequate and efficient provision of school education in their area. This duty applies in respect of both the current school population and anticipated pattern of demand. In addition, Councils have a statutory duty to secure best value in terms of the Local Government in Scotland Act 2003.
5. This Proposal Document has been issued to seek views on the proposals in this paper and report back to Midlothian Council on the outcome of the consultation in order that the Council can make a decision on any proposed changes.

Proposal Document issued to consultees and published on Midlothian's website

6. An information leaflet setting out details about the proposal and consultation meetings will be issued to the consultees listed on page 3. Advice on where the complete Proposal Document can be obtained will be included and published on www.midlothian.gov.uk/stmargarets
7. If requested, copies of the Proposal Document will also be made available in alternative formats or translated for readers whose first language is not English.
8. A “Frequently Asked Questions” (FAQs) document has also been prepared which is also available on www.midlothian.gov.uk/stmargarets

Publication of advertisement in local newspapers

9. An advertisement will be placed in the Midlothian Advertiser and a pre-announcement will be made on the Council's website and social media platforms.

Length of Consultation Period

10. The consultation period will commence on 28/9/21 and will last until close of business on 16/11/21 being a period of 6 weeks, which also includes the minimum 30 school days.

Format of Public Meetings

11. A public meeting will be held on 12th October and a virtual meeting through Microsoft Teams on the 13th October, the details of which are set out below in paragraphs. These meetings may be subject to Covid-19 restrictions and any advice from the Scottish Government.

Involvement of Education Scotland

12. When the Proposal Document is published, a copy will be sent to Education Scotland by Midlothian Council. Education Scotland will also receive a copy of any relevant written representations that are received by the Council from any person during the consultation period, or if Education Scotland agree, a summary of them. Additionally, Education Scotland will receive a summary of any oral representations made to the Council at the public meetings and drop in sessions that will be held and, as available, a copy of any other relevant documentation.
13. Education Scotland require three weeks within which to prepare a report on the educational aspects of the proposal after the Council has sent them all the representations and documents as mentioned above. The three-week period will not start until after the consultation period has ended. In preparing their report, Education Scotland may visit the affected schools and make such reasonable enquiries of such people there as they consider appropriate.

Preparation of the Consultation Report

14. The Council will review the proposal having regard to the Education Scotland report, written representations that it has received and oral representations made to it by any person at the public meeting and drop in session. It will then prepare a final Consultation Report. The report will be published in electronic and printed formats and will be advertised in the local newspaper. It will be available on the Council website, from the affected schools and by request from Council Headquarters, Fairfield House, Dalkeith. Anyone who has made written representations during the consultation period will also be informed about the report. The Consultation Report will include a record of the total number of written representations made at the public meetings and drop in sessions, the Council's response to the Education Scotland report as well as any written or oral representations it has received, together with the Education Scotland report and other relevant information. It will also set out the actions the Council has taken to address any alleged inaccuracies and omissions

notified to it. The Consultation Report will also contain a statement explaining how it complied with the requirement to review the proposal in light of the Education Scotland Report and representations (both written and oral) that it received. The Consultation Report will be published and be available for further consideration for a period of 3 weeks.

Decision

15. The Consultation Report together with any other documentation will be considered after the end of the 3-week period, by the Council who will come to a final decision on this matter.

Scottish Ministers Call-in

16. At the end of the consultation process, Section 15 of the *Schools (Consultation) (Scotland) Act 2010* enables ministers to call-in a decision to implement the proposed closure of St Margaret's RC Primary School.
17. Beginning on the day the final decision is taken, the Council has a period of six working days to notify Scottish Ministers of the decision. Scottish Ministers then have a period of up to eight weeks from and including the date of the Council's decision to decide if they will call-in the proposal. The Council must publish the fact that the Scottish Ministers have been notified and that representations can be made to the Scottish Ministers within the first three weeks of the eight week period. The Scottish Ministers will take into account any relevant representations made to them by any person within the first three weeks. The Council may not proceed with the implementation of the proposal during the call-in period.
18. If the Scottish Ministers decide to call-in a closure proposal, it is then referred to the Convener of the School Closure Review Panels who has a period of seven days after a call-in notice is issued, to constitute a School Closure Review Panel. The Panel may decide to refuse consent to the proposal, refuse consent and remit it to the education authority for a fresh decision or grant consent to the proposal, either subject to conditions, or unconditionally. The Panel must notify the education authority of its decision within eight weeks from when the Panel was constituted or within sixteen weeks if the Panel has issued a notice to the education authority that a decision has been delayed. The Council may not proceed with the implementation of the proposal until the outcome of the call-in has been notified to the Council.
19. Appendix 1 sets out the timeline for both the Consultation and Scottish Ministers Call-in periods.

Note on Corrections

20. If any inaccuracy or omission is discovered in this Proposal Document either by the Council or any person, the Council will determine if relevant information has been omitted or there has been an inaccuracy. It may then take appropriate action which may include the issue of a correction or the reissuing of a Proposal Paper or the revision of the timescale for the consultation period if appropriate. In that event,

relevant consultees and Education Scotland will be advised. The person, or persons who have raised concerns will receive an individual response to their submission.

Public Meeting and Drop-In Session

21. Two formal public meetings will be held to discuss the proposal. Subject to Covid-19 restrictions and guidance from the Scottish Government, the first will be a meeting which can be attended in person and the second will be a virtual meeting. Anyone wishing to attend these meetings, whether in person or remotely, is invited to indicate which meeting they wish to attend by contacting EducationConsultation@midlothian.gov.uk. The public meetings, which will be convened by Midlothian Council will be addressed by the Executive Director, Children, Young People and Partnerships Directorate and other senior officers of the Council, and chaired by an independent person.
22. The public meetings will be an opportunity to:
 - Hear more about the proposal
 - Ask questions about the proposal
 - Have your views minuted so that they can be taken into account as part of the consultation process
23. The first public meeting will be held on 12/10/2021 at Loanhead Primary School at 6:30pm.
24. The second public meeting will be held as a virtual meeting on 13/10/21 at 6:30pm.
25. Virtual drop-in sessions will be held on 27/10/21, there will be 20 minute time slots available from 10am to 12noon, 2pm to 4pm and 6pm to 8pm please contact EducationConsultation@midlothian.gov.uk to book a time.
26. A minute will be taken at the public meetings of comments, questions and officer responses. A summary of the points raised and responded to will be added to the FAQs published on the Council website. The minute will be forwarded to Education Scotland along with all other submissions and comments that are received by the Council during the consultation process as explained above.

Section B: Proposal for Consultation

Introduction

1. The *Education (Scotland) Act 1980* places a legislative duty on the Council to make adequate and efficient provision of school education across its area. This duty applies in respect of both the current school population and anticipated pattern of demand.
2. Section 3D of the *Standards in Scotland's Schools etc. Act 2000* (as inserted by Section 2 of the *Education (Scotland) Act 2016*) introduces a requirement on education authorities to carry out their duty to ensure the delivery of improvement in the quality of school education which is provided in the schools they manage, with a view to achieving the strategic priorities of the National Improvement Framework. It is, therefore, the duty of the education authority to ensure that the education it provides is directed to the development of the personality, talents and the mental and physical abilities of the children to their fullest potential.
3. In addition, Councils have a statutory duty to secure best value in terms of the *Local Government in Scotland Act 2003* by continuous improvement in performance of the local authority's functions, while maintaining an appropriate balance between quality and cost and having regard to economy, efficiency, effectiveness, equal opportunities and the achievement of sustainable development.

Midlothian's Vision for Education

4. The Council is ambitious for the future of Midlothian. The Vision for Midlothian is a Great Place to Grow. The Community Planning Partnership has identified Carbon Neutral by 2030 as an overarching aim supported by 3 main priorities:
 - Reducing inequalities in learning outcomes
 - Reducing inequalities in health outcomes
 - Reducing inequalities in economic circumstances
5. We continue to aspire to deliver a world-class education system through equity and excellence. Our vision is to provide the highest quality inclusive education, learning and employability service for all individuals and families in Midlothian. To realise this vision we will support the priorities set out in the Single Midlothian Plan, Getting it Right for Every Child and will:
 - give all our children the best possible start in life, providing an inclusive learning environment that builds resilience;
 - ensure that every young person has the opportunity to be a successful learner, confident individual, responsible citizen and an effective contributor who is healthy and happy, especially those who are care experienced;
 - work with our communities to promote high expectations which deliver the best educational outcomes for all learners; and
 - Celebrate diversity, reduce inequalities and remove barriers to learning.

Our Context

6. Midlothian's population is projected to grow by 8% over the next 6 years with significant growth projected across our early years and school age population.
7. In 2020/21 there were:
 - 7,946 pupils in primary schools;
 - 5,429 pupils in secondary schools;
 - 53% children accessing 600 hours, across 2 nursery schools; nursery classes in 26 primary schools; 33 partner providers with whom we commission ELC places and 50 childminders
 - 47% children accessing 1140 hours, across 2 nursery schools; nursery classes in 26 primary schools; 33 partner providers with whom we commission ELC places and 50 childminders
 - 10 specialist provisions, with approximately 210 children and young people attending;
 - 29.03% of children and young people with Additional Support Needs;
 - 3.15% of children and young people recorded as care experienced;
 - 11.35% living in most deprived areas compared with 15.08% living in least deprived areas.
 - A pupil-teacher ratio of 18.83 in primary and 12.66 in secondary
 - 22 school buildings reported as condition A (good), 11 schools reported as condition B (satisfactory) and 7 schools reported as condition C (poor). No schools are reported as condition D (Bad).

Current Education Provision at St Margaret's RC Primary School

8. St Margaret's RC Primary School is a denominational school situated in Loanhead. It welcomes Roman Catholic pupils as well as pupils of other or no faith. To secure Best Value and to better meet the needs of learners the school is currently hosting the Treehouses Additional Support Needs provision whilst new bespoke Additional Support Needs provision is being planned within new schools. It is one of the complement of seven denominational primary schools in Midlothian. The school serves the areas of Loanhead, Bilston and Roslin. A map of the catchment area is provided in Appendix 2.
9. The school roll has declined in recent years from a high of 63 pupils in 2016 to 18 pupils by the time of the 2020 pupil census. At the start of the 2021/22 school year there were 2 pupils attending St Margaret's. Subsequently these pupils have moved to another school leaving 0 pupils on the school roll.
10. The 18 pupils that were enrolled at the time of the 2020 pupil census have as at 14th September enrolled in the following schools;

- Loanhead PS	8 pupils
- Paradykes PS	2 pupils
- Sacred Heart RC PS	2 pupils
- Stobhill PS	2 pupils
- Out with Midlothian	4 pupils

In 2019 the Education Service initiated a review of Midlothian's denominational school provision, in the context of a national shortfall in availability of teachers with approval necessary to teach in Roman Catholic (RC) schools, which will have had an impact on the St Margaret's RC Primary school roll. However, this impact was not reflected across all other denominational schools also affected by the review.

11. The review concluded and was reported to Council in June 2021 (Appendix 3) with the following recommendations:
 - the Council retains six denominational primary schools and one denominational secondary school as part of the learning estate; and
 - authorises the Executive Director Children, Young People & Partnerships to undertake statutory consultation on the proposal to permanently discontinue primary education at St Margaret's RC Primary School and to extend the catchment areas of the neighbouring RC primary schools to include the St Margaret's catchment area
12. The St Margaret's RC Primary School building, which has capacity for 100 primary pupils, is part of the Ramsay Campus which was built in 2007 and is shared with Loanhead Primary School. The shared facilities include two P.E. halls, an expressive arts hall, dining facilities and a well-equipped playground. The campus is a PPP facility with a life cycle maintenance programme which maintains the building to a high standard. Both Loanhead PS and St Margaret's RC PS are rated Good (A) for condition and Good (A) for suitability.
13. If this proposal is passed, the future use of the building would require to be assessed. A few potential options may be that it is required to satisfy the demand for Additional Support Needs pupils or retained to meet capacity pressures due to the region's growth. These and any other potential options will have to be considered.
14. The school does not have a separate nursery. Pupils who go on to attend St Margaret's RC Primary School have often attended the Loanhead Nursery which is co-located on the Ramsay Campus.
15. There are approximately 4,970 dwellings in the catchment of St Margaret's RC Primary School. In August 2020 there were 735 primary-aged children residing in the area and attending a Midlothian primary school. Of these only 11 pupils attended St Margaret's with another 7 pupils attending as a result of parental choice.
16. Curriculum for Excellence (CfE) sits at the heart of what Midlothian Council is committed to achieving in terms of raising attainment and achievement, and improving educational outcomes for all children. CfE is intended to nurture successful, effective, confident and responsible children, able to learn and utilise learning in a way that helps them reach their full potential and to respond to the increased variety and pace of change in today's and tomorrow's world.
17. Most of the families who have moved recently from St Margaret's RC Primary School have chosen Loanhead Primary School for their children's primary school, which has a roll of 189 pupils. At the time of the 2020 pupil census of the 735 children residing in the St Margaret's catchment 720 were attending a non-denominational primary school, with 15 attending an RC primary school.

18. The history of the pupil roll of St Margaret's RC Primary School since 1996 is shown on page 12. The highest roll recorded over these years was in 2003 when there were 88 pupils on the roll. The school roll has fallen over recent years from 63 pupils in 2016 to today's pupil roll of 0 pupils.
19. The Council's Learning Estate Strategy 2017 – 2047 cautions against the building of smaller primary schools, with capacity for up to 210 pupils, and prefers a model with larger primary schools which are more sustainable, particularly in non-rural areas. The strategy recognises that approximately 12% of pupils attending Midlothian primary schools choose to attend a denominational school and notes that a larger catchment area with approximately 9,000 homes is required to sustain a single stream denominational school.
20. Informal consultation meetings were held with staff and parents over 2019 and 2020 as part of the denominational review. Parental support for the RC schools in Midlothian in terms of choice of school remained strong throughout this period with the exception of St Margaret's RC PS. The school roll at St Margaret's RC PS fell from 40 to 18 pupils and there were indications that a number of these children would move to other schools in the near future.
21. In June 2021 officers of the Council held virtual meetings with St Margaret's RC PS parents and representatives of the Catholic Church informing them of the intention to propose to proceed without delay to statutory consultation on the proposal to close St Margaret's.
22. Consequently on 29 June 2021 at full Council the Executive Director Children, Young People & Partnerships was authorised to undertake statutory consultation on the proposal to permanently discontinue primary education at St Margaret's RC Primary School and to extend the catchment areas of the neighbouring primary schools to include the St Margaret's RC PS catchment area.

Proposed Changes to School Catchment Boundaries

23. The proposal is to redistribute the catchment area of St Margaret's RC Primary School to the neighbouring RC primary schools on the basis of the shortest route between the schools based on current bus routes. This approach is proposed as the direct route from Roslin to Bonnyrigg via Roslin Glen is not used as a public transport route.
24. In addition it is proposed to align the boundaries of St Mary's, St Matthew's and Sacred Heart RC Primary Schools with the catchment boundaries of the non-denominational primary schools in these areas so that all children residing in a non-denominational primary school catchment area will have the same denominational catchment school.
25. On this basis the catchment of:
 - St Mary's RC Primary School will be expanded to include the catchment areas of Bilston, Paradykes and Loanhead;
 - Sacred Heart RC Primary School will be expanded to include the catchment area of Roslin;
 - St Matthew's RC Primary School will be expanded to include Firth Mains, Firth Road & Rosslynlee

26. The closure of St Margaret's RC Primary School will directly affect the following schools and is considered in this Proposal Document:
- St Margaret's RC Primary School
 - St Mary's RC Primary School
 - St Matthew's RC Primary School
 - Sacred Heart RC Primary School
27. The following schools will be indirectly affected by the proposal:
- St David's RC High School
 - Loanhead Primary School
28. The factors which have been considered in the development of this Proposal Document are:
- The responsibilities associated with the National Improvement Framework and the new duties imposed on Education Authorities by the Standards in Scotland's Schools etc. Act 2000 as amended by the 2016 Act.
 - The agreed principles underpinning the development of an empowered school led system set out in the 'Education Bill Policy Ambition- Joint Agreement', June 2018
<https://www.gov.scot/Publications/2018/06/8745/downloads>
 - The duties placed on local authorities in relation to the adequate and efficient provision of school education in their area
 - The duties placed on local authorities to secure best value in the delivery of services
29. If approved, implementation of the proposal will mean:
- The closure of St Margaret's RC Primary School
 - The transition of all current pupils (if any) to their choice of St Mary's RC Primary School or their catchment non-denominational primary school.

School Roll and Capacity

30. St Margaret's RC Primary School Roll History

Capacity	100	Capacity	100
	Roll		Roll
1996	80	2009	48
1997	79	2010	42
1998	83	2011	32
1999	76	2012	42
2000	79	2013	42
2001	83	2014	50
2002	82	2015	59
2003	88	2016	63
2004	84	2017	59
2005	76	2018	55
2006	73	2019	40
2007	66	2020	18
2008	51	2021	2

Section C: Educational Benefits Statement

Assessment of Likely Educational Benefits on Pupils

1. The Educational Benefits Statement for this proposal has been prepared having regard to the guidance and explanatory notes published by the Scottish Government in association with the Schools (Consultation) (Scotland) Act 2010 and which are available for reference at the following websites respectively:

www.scotland.gov.uk/Resource/Doc/91982/0097130.doc

<http://www.legislation.gov.uk/asp/2010/2/contents>

‘An education authority shall endeavour to secure improvement in the quality of school education which is provided in the schools managed by them; and they shall exercise their functions in relation to such provision with a view to raising standards of education.’

2. As required by the Schools (Consultation) (Scotland) Act 2010 this Educational Benefits Statement is written from the perspective of benefits, should the proposal be implemented. Additionally the self-evaluation tool provided by Education Scotland is used to ensure compliance with the amended procedures now in place from the Act.
3. If this proposal is implemented, the Council believes that there will be considerable educational benefits arising from this. These centre around:
 - Learning and teaching;
 - Meeting learners needs;
 - Broadening the range of opportunities; and
 - A more vibrant and lively learning environment.
4. Curriculum for Excellence (CfE) sits at the heart of what Midlothian Council is committed to achieving in terms of raising attainment and achievement, and improving educational outcomes for all children. CfE is intended to nurture successful, effective, confident and responsible children, able to learn and utilise learning in a way that helps them reach their full potential and to respond to the increased variety and pace of change in today's and tomorrow's world. The principles of Curriculum for Excellence recognise the professionalism of teachers and the importance of this in exercising the freedom and responsibility associated with broader guidance. This means that schools are able to design their curriculum to meet the specific needs of their children and community while delivering their entitlement to a broad general education.
5. The Council is steadfast in our objective to stabilise and strengthen RC provision and denominational education within and across Midlothian. Because of the progress made to date we are now more optimistic about our ability to recruit and retain suitable teachers for our RC schools. With continued investment in our workforce plan, specifically for our RC schools, we will strengthen our ability to grow our own RC teachers, middle managers and head teachers.
6. St Margaret's RC Primary School is a small school situated in the Loanhead settlement, with only two pupils attending the school from the start of the 2021/22

school session. Most of the pupils who have recently chosen to attend elsewhere, attend either Loanhead Primary School or one of the other RC primary schools and continue to benefit from education in a locality familiar to them, and still relatively close to home.

7. The Education Service of Midlothian Council recognises the high quality of education provision offered at St Margaret's Primary School. However it considers that the very small number of children attending the school would benefit more from the wider range and breadth of learning experiences available to them within other learning environments and within a wider peer group at their age and stage.
8. Building the Curriculum 5 states that *'the purpose of the curriculum at the primary stages is to promote children's development and learning across a broad range of contexts in order to develop their thinking and learning and their physical, personal and social growth. Primary education, whether for those in school settings or those not in schools, should support children to develop and mature as independent and cooperative learners who contribute actively across a range of learning and social situations.'*
9. The implementation of this proposal would ensure that the children have this breadth of experience and have parity of access to learning and opportunities offered within larger establishments.
10. As part of the Curriculum of Excellence, one of the aims of Developing Scotland's Young Workforce is to develop increased awareness of the world of work, social skills and employability skills. Such knowledge and understanding and skills acquisition very much benefit from discussions and dialogue with peers of the same age/stage and through increased opportunities for interaction with the community.

Learning and Teaching

11. The curriculum includes a broad range of experiences which are planned for children and young people through their education, to help every child and young person to develop knowledge, skills and attributes for success in learning, life and work. In St Mary's RC Primary School and other non-denominational Primary Schools in the catchment, children are encouraged to be eager and active participants, who are engaged both individually and cooperatively in groups, resilient and highly motivated during their learning. Children know that their views are sought, valued and acted upon.
12. The learning environment encourages high levels of achievement, providing a wide range of opportunities for children to achieve their full potential within the four contexts of learning. In St Mary's RC Primary School and other non-denominational Primary Schools in the catchment, children may be taught in classes composed of children from more than one year group and may have a wide variation of ages. Children benefit from being part of a social context in which they can build relationships with different groups and individuals, develop social skills, meet challenges and exercise responsibilities as members of a social group. They are able to interact and socialise with groups of children, take part in team activities and move with their peers to secondary school.
13. At St Mary's RC Primary School and other non-denominational Primary Schools in the catchment, staff are challenged and supported through a range of continuous career long professional learning opportunities gained by working and learning with a

range of colleagues. St Mary's is part of the St David's RC High School Associated School Group, which means that staff can collaborate readily across sectors, moderation and tracking of pupil progress is robust, and staff can more easily support a wide range of needs across age and stage appropriate groups. This includes support for those working towards individual milestones.

14. Colleagues within St Mary's RC Primary School and other non-denominational Primary Schools in the catchment are able to support and challenge each other on a daily basis, moderating their planning and learning experiences with colleagues working with children at the same level, thus ensuring appropriate support, challenge and progression. The whole staff team is able to bring a range of talents and skills to benefit outcomes for learners.
15. St Mary's RC Primary School and other non-denominational Primary Schools in the catchment encourages nurture and positivity. One aspect of this work is a successful Buddy System. Children from different stages work and learn together. This vertical support is particularly evident on sports day and in the dining room when groups of children are together in a social context. This system develops and benefits both the 'buddy' and the 'buddied'. This system works well and benefits the wide range of children in the school.

Meeting Learners' Needs

16. Through the Getting it Right for Every Child (GIRFEC) practice model, meeting the needs of every child continues to be a priority and teachers carefully plan and assess to ensure each child has the opportunity to reach their potential. Careful tracking and monitoring procedures are in place to evidence pupil progress. At St Mary's RC Primary School and other non-denominational Primary Schools in the catchment this includes professional dialogue with teachers, learning discussions with children, classroom observations, assessment and looking at pupil work.
17. St Mary's and other non-denominational Primary Schools in the catchment also have planned meetings and discussions with parents. These discussions between home and school improve parental engagement whilst focussing on next steps for learning. Where appropriate, interventions are put in place, while working effectively with other agencies and parents to ensure the needs of each child are met, including for those working towards individual milestones.
18. The staff, parent body and partner groups also bring opportunities for increased collaborative working. This applies both in terms of the wider curriculum and within aspects of the curriculum that may be enhanced by staff individual expertise e.g. PE, language, science, expressive arts teaching.
19. A 'Respect Me' policy is built into class lessons and permeates the whole school ethos through assemblies and collaborative class work on rights and responsibilities.

Broadening the Range of Opportunities

20. Curriculum for Excellence (CfE) helps our children gain the knowledge, skills and attributes needed for life in the 21st century. The development of skills is integral to

supporting our children to become successful learners, confident individuals, responsible citizens and effective contributors (the four capacities). The range of skills and attributes that children develop should provide them with a sound basis for their development as lifelong learners in their adult, social and working lives, enabling them to reach their full potential.

21. These skills should be developed across all curriculum areas, and are embedded into the Curriculum for Excellence Experiences and Outcomes, requiring teachers to plan opportunities to develop them in a variety of ways, including engagement in active learning, interdisciplinary tasks and to experience learning in practical contexts. A critical part of all of this is learning in collaborative and cooperative situations with peers and age and stage appropriate groups.
22. Children at St Mary's RC Primary School and other non-denominational Primary Schools in the catchment are offered a range of active, planned experiences which help them develop the knowledge and understanding, skills, capabilities and attributes which they need for their mental, emotional, social and physical wellbeing both now and in the future. This is in line with their entitlement to a broad general education.
23. There is also a strong transition planning process between St Mary's RC Primary Schools and St David's RC High School, which involves opportunities for children to participate and to make new connections.
24. Children at St Margaret's RC Primary School would benefit from a variety of experiences to develop their sense of responsibility, independence, confidence and enterprising attitude, as well as teamwork experiences, which are provided at St Mary's RC Primary School and other non-denominational Primary Schools in the catchment through work with larger cohorts of children of the same age and stage, and working at the same level.
25. Across St Mary's RC Primary School children are engaged with learning and contribute well in lessons. Staff promote positive relationships at all levels, the impact of this being that children enjoy good relationships with their peers. They also have opportunities to support each other in their learning through cooperative and collaborative peer experiences.

Environment for Learning

26. St Mary's RC Primary School and other non-denominational Primary Schools in the catchment are suitably-equipped and well supported, situated within 4.2 miles of St Margaret's RC Primary School. The St Mary's RC PS building is part of the new Hopefield Road School Campus, it is rated good (A) for both condition and suitability. The school building is large enough to provide a full range of facilities, including Early Years provision and has facilities for pupils and visitors with special access needs.
27. The learning environment in St Mary's RC Primary School and other non-denominational Primary Schools in the catchment offers children the opportunity to participate in a wide range of active learning strategies, using atria and dedicated expressive arts and PE spaces.

Assessment of the effects of the proposal (if implemented) on other users of the school

Implications for staff

28. If this proposal is implemented, the staff in St Margaret's RC Primary School will all be offered positions in other schools or settings. The staff will be supported by the HR Support Processes in the Council to ensure a smooth transition in their roles.
29. If this proposal is implemented, there will be no new implications for teaching and support staff in St Mary's RC Primary School.
30. If this proposal is implemented, the Council does not envisage any adverse effects from the proposal in respect of staffing. Should issues arise however, these will be mitigated through the Council's Educational Leadership Team support structure.

Assessment of likely educational benefits on any children who would be likely to become pupils at St Mary's RC Primary School within two years of the publication of the proposal paper.

31. Children who may live in this catchment area in the future will benefit from the broad range of educational opportunities which are presented through this proposal, as detailed above.
32. Pupils who would otherwise have attended St Margaret's RC Primary School, would benefit from daily interaction in a larger denominational peer group and from improved educational arrangements as described above. St Mary's RC Primary School is a larger school which is able to support a wider range of social and extra-curricular activities. Pupils attending St Mary's RC Primary School will have more shared experiences and opportunity for friendships. This will enhance their confidence and ease their transition to secondary school. Larger year groups make the provision of specialist services more viable and provide enhanced opportunities for school trips. St Mary's RC Primary School meets the requirements of the Equality Act 2010.

Assessment of the effects of the proposal (if implemented) on other pupils in the Council area

33. The cost per pupil of operating St Margaret's RC Primary School is relatively high compared with other Midlothian primary schools due to the low number of pupils attending. The reduction in school operating costs which would be achieved by the closure of St Margaret's RC Primary School means that this is a saving to the Council, though the future use of the building if the proposal has yet to be decided and may be retained to meet other Educational demands. (See Appendix 4)
34. There are no other significant negative impacts from this proposal on other pupils in the authority or on those who attend other schools. Council may decide that the saving that will be made if this proposal is implemented would be retained in the Education budget to the benefit of pupils across the learning estate.

Placing requests

35. This proposal will not affect the right of parents to request that their child attend a school of their choice rather than the designated school in whose catchment area the family lives as provided by the Education (Scotland) Act 1980.

36. Summary of Educational Benefits Statement

37. In summary, there is a range of educational benefits for pupils if this proposal is to be implemented, as summarised in the paragraphs above. There are benefits for the development of peer collaboration and cooperation, of social and emotional skills, as well as the educational benefits resultant from access to a more diverse curriculum. Also the pupils will benefit from a Roman Catholic Education within a larger denominational community.
38. The educational benefits of this proposal, such as the ability for children to participate in a broader range of learning experiences, to learn within a wider peer group at their age and stage, and to have parity of access to learning and opportunities, are significant and will better meet the educational, social and emotional needs of the children.
39. The one negative aspect for pupils identified arises from the children currently attending St Margaret's RC Primary School having to travel further from home to school. However it is considered that the positive aspects of this proposal outweigh the negative aspect of some travelling for children.

Section D: Consideration of Alternative Options and Other Implications

1. The Council's Learning Estate Strategy 2017 – 2047 cautions against the building of smaller primary schools, with capacity for up to 210 pupils, and prefers a model with larger primary schools which are more sustainable, particularly in non-rural areas. It is therefore considered preferable to progress a solution for the St Margaret's RC Primary School community aligned with the Council's preference for larger primary schools.
2. The Denominational Review looked at a number of options to stabilise and strengthen RC provision and denominational education within and across Midlothian. Informal consultation meetings were held with staff, parents and representatives of the Catholic Church over the period of the review. Parental support for the RC schools in Midlothian in terms of choice of school remained strong throughout this period with the exception of St Margaret's RC PS. The school roll at St Margaret's RC PS fell from 40 to 18 pupils and there were indications that a number of these children would move to other schools in the near future.
3. In June 2021 officers of the Council held virtual meetings with St Margaret's RC PS parents and representatives of the Catholic Church informing them of the intention to propose to proceed without delay to statutory consultation on the proposal to close St Margaret's RC PS.

4. Consequently on 29 June 2021 at full Council the Executive Director Children, Young People & Partnerships was authorised to undertake statutory consultation on the proposal to permanently discontinue primary education at St Margaret's RC Primary School and to extend the catchment areas of the neighbouring primary schools to include the St Margaret's catchment area.

Transition Arrangements

5. Subject to the conclusion of the Scottish Ministers eight-week call-in period or the notification of the outcome of a call-in, as appropriate, if approved, the closure of St Margaret's RC Primary School will take effect from 1 July 2022.
6. Children currently attending St Margaret's RC Primary School will be supported to make the transition to St Mary's RC Primary School, or to their non-denominational primary school as appropriate. The Education Service will work closely with the staff, parents and pupils of St Margaret's RC Primary School to ensure children are supported effectively to transition to their new school and that continuity and progression in their learning is sustained.

Staffing Implications

7. If this proposal is implemented, the staff in St Margaret's RC Primary School will all be offered positions in other schools.
8. If this proposal is implemented, there will be no new implications for teaching and support staff in St Mary's RC Primary School.
9. If this proposal is implemented, the Council does not envisage any adverse effects from the proposal in respect of staffing. Should issues arise however, these will be mitigated through the Council's Education Leadership Team support structure.

Financial Implications

10. The full breakdown of the financial analysis is detailed in Appendix 4.
11. This information gives details on the estimated cost of operating St Margaret's RC Primary School for the financial year 2021/22.
12. Column 2 of Table 1 at Appendix 4 shows the projected annual running costs of St Margaret's RC Primary School whilst Column 3 shows the additional impact on St Mary's RC Primary School as the receiving school. The annual recurring savings (or costs) are shown in Column 4.
13. The main elements included within a school budget are teacher employment costs (i.e. basic salary costs plus related employer's National Insurance and Superannuation contributions plus any relevant individual allowances); Local Government employee costs and an allocation for discretionary expenditure incurred by the school (i.e. educational equipment, materials, staff travel, etc.). Teacher staffing budgets are calculated on an annual basis and within the primary sector are determined, taking cognisance of the SNCT class size maxima, by the number of classes required to provide for the specific number and age of the pupils in each

school. When a school ceases to be operational the teacher staffing budget is adjusted (at the appropriate time), with the staffing budget resulting in a nil value.

14. In line with the national priority of maintaining teacher numbers, the Education Service operates on the basis that supernumerary teachers are redeployed and therefore their salary costs still exist. As Midlothian's population is increasing the authority employs additional teachers year on year and it is anticipated that any supernumerary teachers from St Margaret's RC Primary School can be redeployed and reduce the required number of additional teachers. Some of the costs noted in column 3 of Table 1 will not directly impact on St Mary's RC Primary School but they will be a cost to the Authority as a whole, for example school transport costs.
15. Table 2 shows the average annual lifecycle cost of £21,323 that would arise based on the Gross Internal Floor Area of St Margaret's RC Primary School, irrespective of the number of pupils accommodated. Lifecycle costs are representative of the cost needed to keep the building in a good state of repair. The notional cost over the next thirty years therefore to maintain St Margaret's RC Primary School is £639,690.

Revenue Budget Implications

16. Should this proposal be implemented there is an estimated annual revenue budget saving of £26,593. This saving is predicated on the disposal of the building, revenue costs will continue to be borne by the Council until such time.

Capital Budget Implications

17. There are no capital budget implications directly associated with this proposal. Housing developments across Midlothian make a contribution to the cost of providing consequential educational capacity. This applies equally across the St Margaret's catchment and any contributions received will be applied against the cost of the additional capacity that will be provided to serve the area.

Integrated Impact Assessment

18. The Council as a public authority has a duty under the Equality Act 2010, the Public Sector Equality Duty 2011, and the Fairer Scotland Duty (Part one of the Equality Act) to have due regard to their provisions when making strategic financial decisions. This is done through assessing the potential impact of the decision on equality through an Equality Impact Assessment. The Council will undertake the process of assessment during the consultation process in respect of this proposal to ensure that due regard is given to such matters in the decision making process.
19. The result of the Integrated Impact Assessment will be included in the final Consultation Report document.

Section E: Conclusion

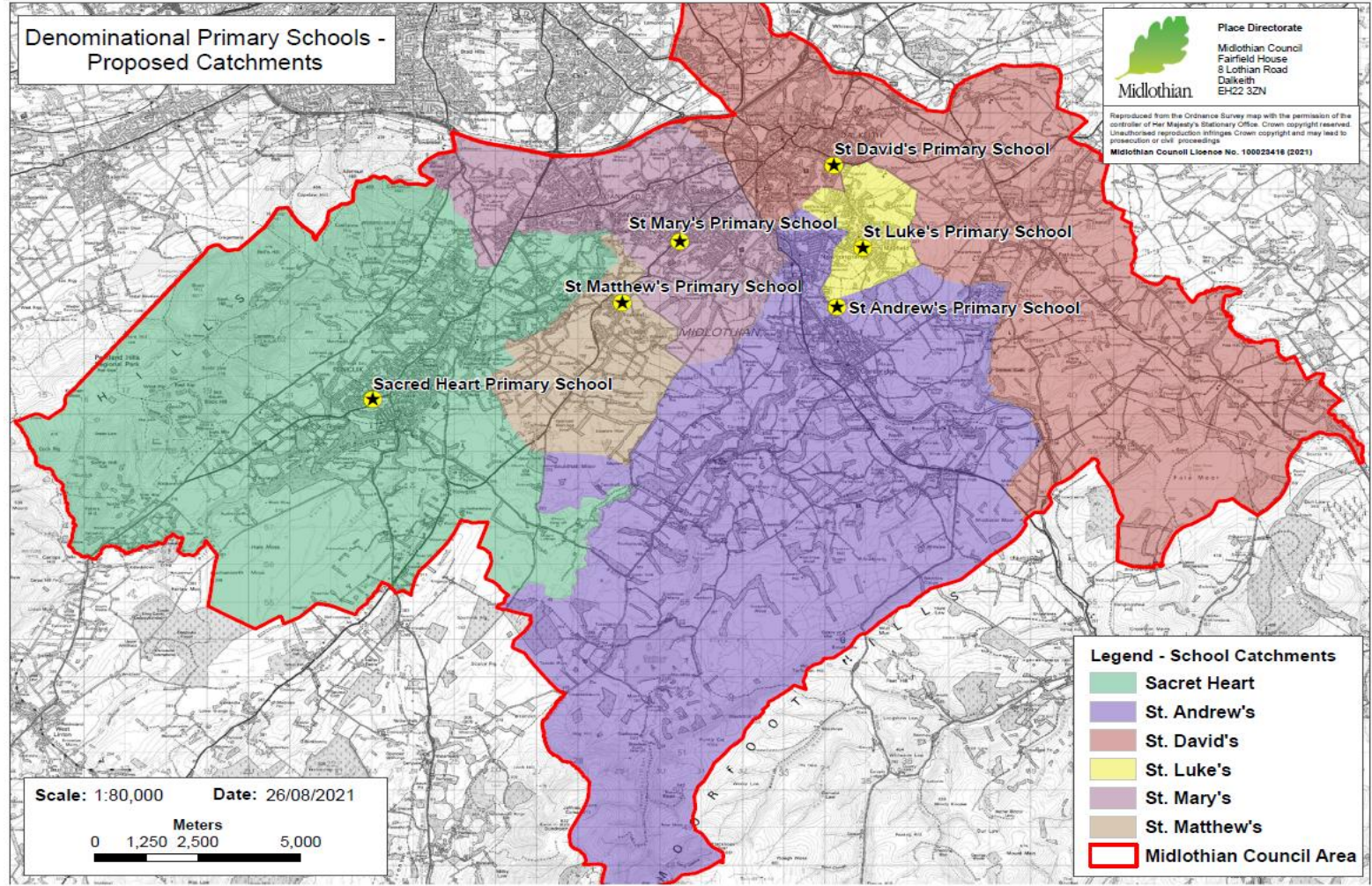
1. It is proposed that education provision at St Margaret's RC Primary School be discontinued with effect from 1 July 2022 and the catchment areas of St Mary's, St Matthew's and Sacred Heart RC Primary Schools be extended to include the current catchment area of St Margaret's RC Primary School.
2. This proposal will bring educational benefits to the present and future users of the affected schools and assist in ensuring that the Education budget is more sustainable into the future, as the costs per pupil in under-occupied schools are excessively high. This is in line with our duty to secure best value.
3. As part of the Council's Asset Management Strategy, the future use of the building would require to be assessed. A few potential options may be that it is required to satisfy the demand for Additional Support Needs pupils or retained to meet capacity pressures due to the region's growth. These and any other potential options will have to be considered.
4. Overall there are no environmental impacts as a result of this proposal.
5. Overall there are strong educational arguments in favour of this proposal.

Appendix 1:

St Margaret's Consultation and Scottish Ministers Call-In Process Timeline

	Date Beginning	Date Ending	Duration
Statutory Consultation Period Including: <ul style="list-style-type: none"> • Public meetings • Drop in sessions • Engagement with staff, pupils and parent councils 	28/9/21	16/11/21	6 weeks
Education Scotland Engagement Period	17/11/21	8/12/21	3 weeks
Publication of Consultation Report	9/12/21		
Further Consideration after publication of report	9/12/21	20/1/22	3 weeks
Consideration of Consultation Report by Midlothian Council	15/2/2022		
Notification of Council Decision to Scottish Ministers	within 6 working days of Council decision		
If proposal approved, Scottish Ministers Consideration of Council Decision	up to 8 weeks from Council decision		
If proposal not called-in by Scottish Ministers – Council implementation of Proposal	12/4/22		
If proposal called-in by Scottish Ministers – Council implementation of Proposal	subject to decision of Scottish Ministers		
If proposal called-in – Scottish Ministers refer to School Closure Panel for review	subject to decision of Scottish Ministers		
If proposal called in by Scottish Ministers and the School Closure Review Panel consents to the proposal – Council Implementation of Proposal	subject to decision of Scottish Ministers		

Appendix 2:
Catchment Map



Appendix 3 – Denominational Review June 2021



The Education Service has carried out a review of Midlothian's denominational school provision in the context of a national shortfall in availability of teachers with approval necessary to teach in Roman Catholic (RC) schools. In 2016 the Catholic Church through Archbishop Tartaglia declared a 'crisis in faith education' due to the shortage of Catholic teachers in Catholic Schools (The Tablet.co.uk June 2016). This situation has not improved since 2016 and our objective in undertaking this review has been to find ways to stabilise and strengthen RC provision and denominational education within and across Midlothian.

The relevant legislation on the management of denominational schools in Scotland states that: "A teacher appointed to any post on the staff of any such school by the education authority shall be required to be approved as regards religious belief and character by representatives of the church or denominational body in whose interest the school has been conducted" (Education (Scotland) Act 1918; Education (Scotland) Act 1980 Section 21(2); Self-Governing Schools etc. (Scotland) Act 1989 Sch.10)

The guidance on applying for Approval to teach in a Catholic school issued by the Scottish Catholic Education Service on behalf of the Bishops' Conference of Scotland states that: "To enable Councils to fulfil their statutory responsibilities, the Catholic Church requires to be assured that the personal "religious belief and character" of a teacher is appropriate to the duties associated with the teaching post for which he/she has applied. When seeking approval, a teacher must demonstrate how his/her personal "religious belief and character" enables him/her to undertake the duties of the particular teaching post within the context of a Catholic school, with its particular mission, values and ethos, as outlined in 'A Charter for Catholic Schools in Scotland'."

All teachers working in Catholic schools require to have Church approval. At the point the denominational review was initiated, the RC primary schools across Midlothian were operating with only 50% of teaching staff having Church approval to teach Religious Education and temporary shared headship arrangements in place for four of our RC primary schools. This followed a number of challenging years in relation to recruitment of both teaching and senior leadership staff.

Since then there has been a sustained effort to employ a greater number of teachers with the necessary qualifications to teach in our RC primary schools and for teachers working in our RC schools to undertake the Catholic Teaching Certificate and, therefore obtain Church approval to teach Religious Education. Looking forward to the 2021/22 school year we have set the intake capacity of our RC primary schools taking account of suitably qualified teachers in each school. Taken together these strategies can be seen to be having a positive impact as we anticipate that 67% of the class teachers in our RC primary schools next year will have Church approval to teach Religious Education.

A permanent shared headship has been established at Sacred Heart and St Mathew's Primary Schools, which has brought greater stability to the leadership of both schools. There are no longer any temporary shared headship arrangements in place, however, there are still temporary leadership arrangements at three of our RC primary schools.

In Midlothian, at the time of the 2019 pupil census, our seven RC primary schools had a total of 907 pupils and St David's High School, which serves Musselburgh as well as Midlothian, had 648 pupils. The overall percentage of children attending our RC primary schools in 2019/20 who had a declared affinity with the RC faith was 40%:

RC Primary School	Total Roll	Percentage RC
Sacred Heart	127	34%
St Andrew's	157	36%
St David's	192	41%
St Luke's	201	34%
St Margaret's	40	48%
St Mary's	135	51%
St Matthew's	55	41%
	907	40%

Midlothian, as one of the fastest growing local authorities, has rising school rolls across both primary and secondary schools and our RC schools play an important role in providing capacity, particularly in areas of significant pressure such as Bonnyrigg, Dalkeith, Gorebridge and Mayfield. The pupil enrolment process for August 2021 is now well progressed and the demand for Primary 1 places at St David's, St Luke's and St Mary's has been greater than the number of places available. To date there are no Primary 1 pupils enrolled at St Margaret's for the coming school year.

The projections for August 2021 is shown in the tables below:

School	Total Roll	Number of Classes	Percentage RC
Sacred Heart	120	6	37%
St Andrew's	150	7	43%
St David's	190	7	51%
St Luke's	203	8	36%
St Margaret's	18	1	39%
St Mary's	160	7	47%
St Matthew's	56	3	52%
	897	39	43%

All RC Primary Schools – Projected Number of Pupils by Year Group							
P1	P2	P3	P4	P5	P6	P7	Total
104	128	129	120	136	139	141	897
St David's RC High School Projected Roll 2021/22							
S1	S2	S3	S4	S5	S6	Total	
138	135	142	139	109	98	761	

Parental support for our RC schools in terms of choice of school remains strong: the pupil roll of St David's RC High School is growing; the number of pupils attending six of our seven RC primary schools is stable, with a slight increase in the percentage of pupils attending being baptised Roman Catholic. However, the school roll at St Margaret's RC Primary School has fallen from 40 to 18 pupils and there are indications that a number of these children will move to other schools in the near future. As of August 2021, there were 2 pupils remaining.

Taking account of the growth in housing across Midlothian, which will lead to significant growth in total pupil numbers, the Council's learning estate strategy makes provision for investment in new schools and school expansions. Over the past year the refurbishment and expansion of Sacred Heart in Penicuik was completed and we opened a new St Mary's school building in Bonnyrigg. The Council has been awarded funding as part of Scottish Government's Learning Estate Investment Programme to replace the Mayfield School Campus, including the replacement of St Luke's RC Primary School. Plans are being formulated for the refurbishment and expansion of St David's RC Primary School in Dalkeith and the strategy allows for an extension to St Andrew's Primary School in Gorebridge.

St Matthew's RC Primary School serves the rural community of Rosewell and is included in the Scottish Government's list of rural schools. The school building it occupies is leased from the Church and the Council has no plans to make the significant investment that would be required to replace this capacity. St Matthew's Primary School may not continue to be considered rural given the significant housing developments in the area.

In the Denominational Review Briefing document of 18 March 2020 we advised that we had applied the following required outcomes in arriving at the preferred school model of four RC primary schools, with locations in Dalkeith, Gorebridge, Bonnyrigg and Penicuik, and 1 RC secondary school:

- To reduce the required complement of head teachers and teaching staff with Church approval to teach Religious Education;
- To create an RC school structure which provides opportunities for staff progression;
- To maintain sufficient primary RC school capacity across Midlothian;
- To minimise the detrimental effect on the number of pupils who will go on to attend St David's High School;
- To minimise the increase in distances for children to travel from home to school.

Very shortly after that Covid19 struck and delayed our plans to carry out further engagement activities and to progress to statutory consultation as quickly as possible.

We are steadfast in our objective to stabilise and strengthen RC provision and denominational education within and across Midlothian. Because of the progress made to date we are now more optimistic about our ability to recruit and retain suitably qualified teachers for our RC schools with church approval to teach Religious Education. With continued investment in our workforce plan, specifically for our RC schools, we will strengthen our ability to grow our own RC teachers, middle managers and head teachers.

In light of all the foregoing we now believe that we can achieve the required outcomes while making fewer changes to the structure of our RC schools. Any change will require statutory consultation and our next steps prior to the meeting of Council on 29 June are:

- to engage with schools that will be directly affected by the proposals for consultation;
- to engage with Church representatives on the proposals for consultation;
- to draft a paper to obtain governance from Council on 29 June to progress proposals to statutory consultation.

A further briefing will follow before the end of the school session, providing details of the proposals for consultation. This will be timed to ensure that schools are fully informed prior to the council papers being made public.

7 June 2021

Appendix 4: Financial Analysis

Table 1: Current revenue costs for school proposed for closure			
St Margaret's Primary School	Costs for full financial year (projected annual costs)	Additional financial impact on St Mary's Primary School	Annual recurring savings (column 2 minus column 3)
School costs			
teaching staff	142,288		142,288
support staff	20,226		20,226
Teaching staff training (CPD etc.)	556		556
Building costs:			
non domestic rates	7,822		7,822
water & sewerage charges	1,312		1,312
energy costs	15,483		15,483
cleaning (contract or in-house)	0		0
building repair & maintenance	0		0
other - refuse collection	1,976		1,976
School operational costs:			
learning materials	2,775	14	2,761
catering (contract or in-house)			
other school operational costs (e.g. licences)	180	2	178
Transport costs:			
home to school			
Total Costs for School	192,628	16	192,612
Unit Cost per Pupil per Year of 2 pupils	96,314		

Table 2: Capital Life Cycle Costs	
St Margaret' Primary School	Average Annual Cost
Capital Life Cycle cost	21,323

Table 3: Annual Property costs to be incurred until disposal	
non domestic rates	7,822
water & sewerage charges	1,312
energy costs	15,483
cleaning (contract or in-house)	0
building repair & maintenance	0

Other	1,976
Total Annual Cost until Disposal	26,593

Table 4: Impact on Grant Aided Expenditure (GAE) Allocation	
The Primary Indicator determining the GAE allocation for Primary School Teaching Staff is based on the number of primary school pupils with the secondary indicator being the percentage of pupils in small schools (roll less than 70 pupils averaged over 2 years). The pupils from St Margaret's PS are designated to attend a school which has a roll over 70 pupils.	
However Midlothian Council contributes to the GAE floor mechanism thus will not see a reduction in overall Scottish Government Grant - GAE Impact	Nil

APPENDIX 5: ST MARGARET'S CONSULTATION RESPONSE FORM
Midlothian Council

ST MARGARET'S CONSULTATION RESPONSE FORM

I wish my response to be considered as confidential with access restricted to Elected Members and Council Officers of Midlothian Council. ☐

Proposal	
It is proposed that: Education provision at St Margaret's RC Primary School be discontinued with effect from 1 st July 2022. The catchment area of St Mary's, St Matthew's and Sacred Heart RC Primary Schools shall be extended to include the current catchment area of St Margaret's Primary School.	
Name: (please print)	Address:
	Post Code:
Signature:	Date:

Further detailed information about the proposal, which you are encouraged to read to help inform your response, can be found at

<https://www.midlothian.gov.uk/stmargarets>

Please note the closing date for submission of completed questionnaires is **16/11/21**

You can return this electronically to EducationConsultation@midlothian.gov.uk or by post to St Margaret's Consultation, Freepost SCO 622, Midlothian Council, Dalkeith EH22 1DN

About You

1. Are you responding to this questionnaire as an individual or on behalf of an organisation?

Individual ☐

Organisation (please give details below) ☐

--

2. Which category best describes you?

St Margaret's St Mary's St Matthew's Sacred Heart St David's HS

Parent of current pupil(s)	<input type="checkbox"/>	<input type="checkbox"/>	<input type="checkbox"/>	<input type="checkbox"/>	<input type="checkbox"/>
Parent of future pupil(s)	<input type="checkbox"/>	<input type="checkbox"/>	<input type="checkbox"/>	<input type="checkbox"/>	<input type="checkbox"/>
Pupil	<input type="checkbox"/>	<input type="checkbox"/>	<input type="checkbox"/>	<input type="checkbox"/>	<input type="checkbox"/>
Member of staff	<input type="checkbox"/>	<input type="checkbox"/>	<input type="checkbox"/>	<input type="checkbox"/>	<input type="checkbox"/>
Member of the community	<input type="checkbox"/>	<input type="checkbox"/>	<input type="checkbox"/>	<input type="checkbox"/>	<input type="checkbox"/>
Other (please give details)	<input type="checkbox"/>	<input type="checkbox"/>	<input type="checkbox"/>	<input type="checkbox"/>	<input type="checkbox"/>

3. If you are a parent, please indicate which stage of education your child/ children currently attend (please tick all that apply)

Not yet in education	<input type="checkbox"/>
Pre-school education	<input type="checkbox"/>
P1-P3	<input type="checkbox"/>
P4-P7	<input type="checkbox"/>
S1-S6	<input type="checkbox"/>
No longer in school education	<input type="checkbox"/>

4. To what extent do you agree or disagree with the proposal to discontinue primary education provision at St Margaret's RC Primary School?

Strongly agree	<input type="checkbox"/>
Agree	<input type="checkbox"/>
Disagree	<input type="checkbox"/>
Strongly disagree	<input type="checkbox"/>
No opinion	<input type="checkbox"/>

5. Please use this box if you wish to give a reason(s) for your view or if you wish to make any further comment on the proposal (if you need to continue on a separate sheet, please attach.)

Thank you for completing this Consultation Questionnaire.