

Aim High

Lifelong Learning and Employability
Midlothian Council
Annual Report 2016/17



Midlothian

Lifelong Learning and Employability is part of the Education Service in Midlothian Council.

We support young people, adults and families to improve their life chances through the development of skills for learning, life and work.

We also work with key partners to implement initiatives such as Developing Scotland's Young Workforce, Positive Destinations and Employability.

Our offer

ACCESS TO LEARNING

The chance to
get back into
learning

IMPROVE QUALIFICATIONS

The chance to
improve your
qualifications

HELP WITH POSITIVE DESTINATIONS

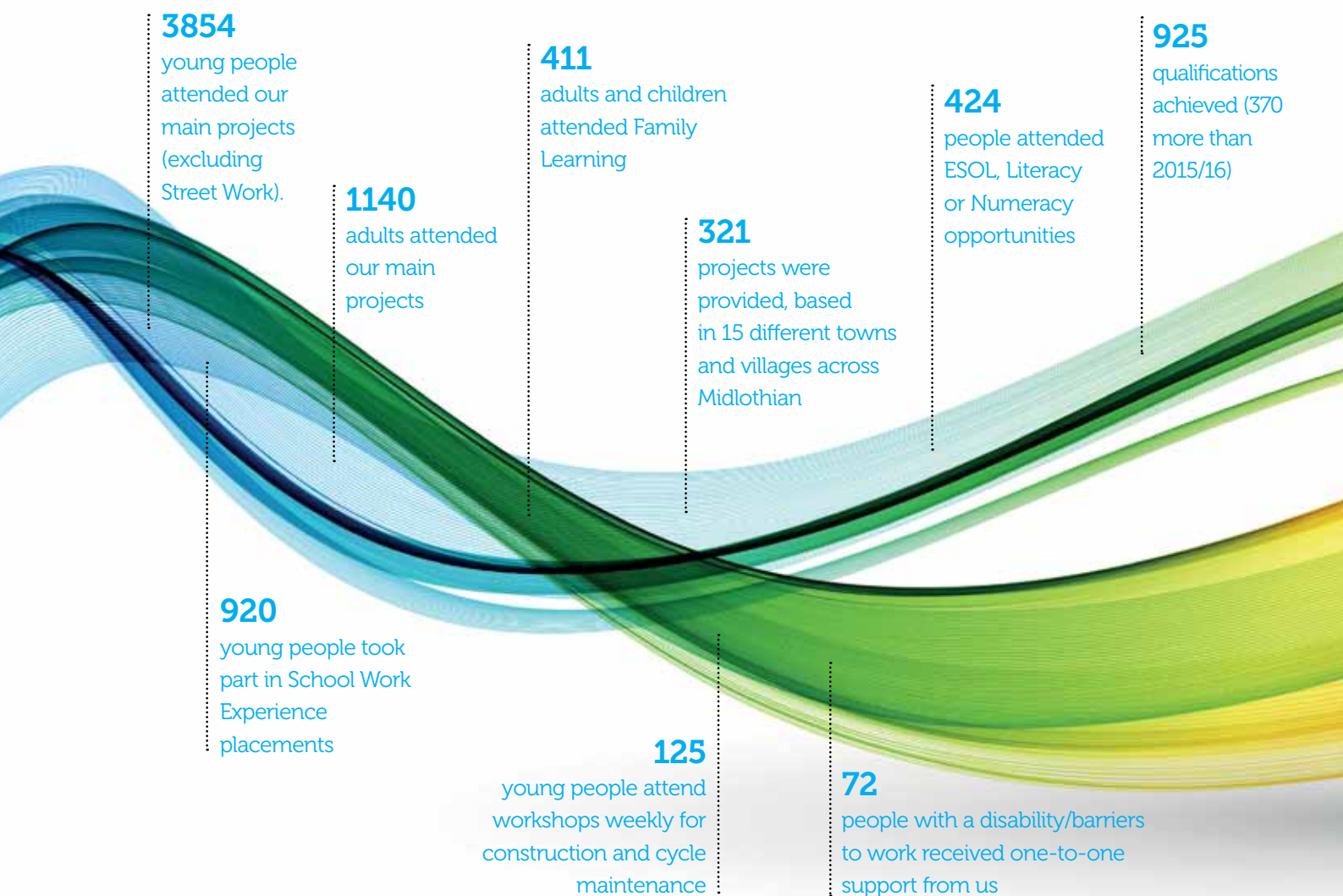
Help towards
a positive
destination –
getting a job,
entering a
training course,
going to college
or university
or volunteering

LOTS OF DIFFERENT OPPORTUNITIES

Lots of different
opportunities –
youth work,
adult learning,
vocational
training and
work experience



Achievements - April 2016 to March 2017



Positive destinations and employability

Young people

Every young person in Scotland is entitled to help towards learning, training, employment or volunteering (a positive destination).

- We assist young people towards employment or learning through Youth Activity Agreements and 1:1 targeted programmes. **205** Youth Activity Agreement

referrals led to **129** offers, of which **69** new agreements were taken up.

- **71** young people moved on to positive destinations: **29** in employment, **12** in employability training, **7** in further education, **3** in modern apprenticeships and **20** other.
- Over **90%** of PAVE participants gained five or more qualifications and moved onto positive destinations: **52%** into college,

12% into employment, **12%** into Transition Group at PAVE and 18% to either Activity Agreements, LLE Pathway or other training programmes.

- We have supported **165** young people to secure a positive destination by means of our new pathways in: Child Care, Retail, College, Youth Work, Employability, Army, Sport and Wellbeing, Music, Rural Skills, Independent Tenancy, Young Mums, PX2, Green and Beauty Therapy.

242

young people started Duke of Edinburgh awards (36% higher than last year). 110 awards were gained.

308

participants from an ethnic minority took part in our opportunities

483

participants from areas of deprivation also participated in our programmes in 2016/17 (8% more than last year)

700

young people participated in Youth Platform's Mental Health Survey

117

day and evening courses were provided, including 22 accredited courses.

1759

adults attended our paid Adult Learning courses including in Beeslack, Lasswade and Penicuik (24% increase from 2015/16)

21

young people attended our Programme for Alternative Vocational Education (PAVE).

LLE supported **61** young people with their Modern Apprenticeship.

- Duke of Edinburgh (DoE) is coordinated by LLE. In 2016/17 young people contributed **4,141** hours of volunteering which was worth to **£17,176** of social value. DoE Leaders contributed **27,689** hours worth **£276,890**.

Adults with Mental Health Issues

- We have supported **37** adults with mental health issues to work towards gaining employment through specialist one-to-one

and group work support. **81%** secured a positive outcome, including employment, training, educational opportunities, volunteering or college.

Adults with Disabilities

- **72** people with a disability or barrier to work received 1:1 support in our FOCUS/WFF projects. **13** people moved into supported employment, **5** into further education, 2 into volunteering and the others

received practical financial support through WFF.

The people behind our statistics – LLE changing Lives

(All participant names have been changed)

"I can see her confidence growing before my eyes"

Supporting Young People back into learning and work

One to One Support, Pave. Pave 2, Pathways and youth projects.

Albert had been out of school for nearly two years due to traumatic events. With his LLE Key Worker he completed a work placement with a local tool hire company, and gained his Nat 3 in Maths and English. He was accepted on a Light Mechanics Maintenance course at college with a promise of a mechanics apprenticeship.

Clark struggled to maintain attendance at school due to his behaviour. With substantial support from LLE Key Workers, Clark successfully improved attendance in LLE PAVE 2 and gained Nat 4s. He completed 40 hrs of volunteering locally, gained new interview skills, and successfully secured a place in the army.

Coleen and Stuart were a young homeless couple living in a B&B, using food banks to get by. Stuart was supported into a trial placement with MARC Recycling earning the living wage, and his attendance after 6 months stands at 100%.

Josie had been doing nothing for 18 months. Within days of a knock on the door from an LLE Worker, she was on the Green Outdoor Pathways progressing to a college course. She is taking driving lessons and looking for part time work. Josie's Mum says "the difference is unbelievable, she has

gone from lying around all day, being depressed and unhappy to having more spring in her stepI'm really glad you knocked on the door".

Matt was disengaged from school and was uncommunicative. He was volunteering for his brother's company. His LLE Worker obtained funding for training, helped him study for his construction safety test and secured a modern apprenticeship for him. He works full time plus some weekends with 100% attendance. He is more talkative, and is studying for his driving theory test.

Midlothian Snow Sports Centre (MSSC) Through the MYJET Programme, one young person was given a one-day a week over the past year with MSSC. They were so impressed by him that he has successfully secured paid hours. He's also doing his food hygiene course whilst still at school.

LLE's Vocational Learning

Heather has attended a 6 week beauty therapy pilot programme at Dalkeith High School. During the course she learned about different skin types and what products to use for each, how to apply make-up and care for nails. She was able to practice these new skills on other pupils in the class, carrying out professional treatments, working as a team and developing communication skills. "I can see her confidence growing before my eyes".

Supporting Adults, Families and Young People through Employability, Lifelong and Vocational Learning.

Employability Programme

John had struggled to secure permanent employment since being made redundant in 2011. He was referred to the CWP programme, where he gained advice and support. John commenced a structured work placement within Midlothian Council. Within 3 months of starting this programme, John successfully secured a full time permanent position with NHS Lothian.

LLE FOCUS 1:1 Employability Service

Julie is a lone parent and is dealing with bereavement and severe financial hardship. She was in arrears with childcare costs and was awaiting benefit outcomes as well as trying to hold down her job. Our Working For Families fund helped with childcare costs for a month and with vouchers for food to keep her in employment.

Pat "I have mental health issues but with support from the Focus service I've set up my own business. I'm still seeking support when I need it to keep healthy. It's a struggle but I'm doing well."

LLE Staff as Mentors through Career Ready

Keira has been to three master classes and developed "a fab relationship" with her mentor. "I'm so much more inspired and confident, can't thank you enough Lily thanks for being there egging me on."

Corinne's mentor placed her with a photographer where she spent 4 weeks learning the craft of photography. This opened her eyes to other avenues available to her, gave her valuable skills and self assurance. She spoke at this year's launch event with confidence, and networked a room of business people at a DYW event – not something we would have thought possible before Career Ready.

LLE Aim High Core Skills for Employability

Margaret, 53 is a mum of 4. Since leaving school she's brought up her children and worked, but is currently unemployed. Margaret attends the Aim High on a one to one basis. 'Being on the course has really improved my confidence in IT, writing & typing skills'.

She now successfully volunteers in a Salvation Army shop and has applied to support older people with Connect Online as a volunteer. Margaret is working towards an SQA Communications qualification and hopes to get paid work in an office.

Aim High Construction

Bob said that the Aim High programme has helped him to be more confident and has allowed him to be able to speak and work with new people. The course has given him skills, including how to behave in the work environment.

Gilly "Coming to the construction workshops has been a massive boost to my confidence and the support that the staff gives you is great. I'm the only girl in a group of 11 boys and coming to the workshops and challenging myself on the construction based tasks has shown me that I can do this every bit as good if not better than them. Construction is not just for boys, more girls should do it as well."

LLE Job Club

"I took my 16 year old son up to the job club in order to get help with making a CV. While we were

there I told her I was thinking about taking a night class to brush up on my computer skills in order to get a better job and found one at Penicuik High School. Susan showed me how to apply for funding for the course and I am now attending. My son has also started a new job after school and is keeping his CV up to date".

English for Speakers of other Languages

Ali is 33 years old. He came to Scotland in April 2016 as a refugee from Syria with no English at all. He attended ESOL classes with his wife and is now able to communicate in basic English. He started volunteering in a local café in December 2016, and now works in the kitchen for around 10 hours a week. Ali is working hard to improve his English and wants to get work in a garage in the future.

The Young People's ESOL

"**Speakeasy**" group supports S5/S6 learners and unaccompanied young asylum seekers, all with limited English. Currently there are two Polish migrants and three Vietnamese in the group. The young people were lacking in confidence, but with regular attendance, they have improved in all skills. Throughout, the ESOL service has liaised closely with the schools, foster carers and social work in order to provide the best support possible for these vulnerable youngsters.

Progress through Learning Midlothian – from community based learning to university.

After several years as a stay at home mum, **Jean** discovered some locally-run courses, beginning with a parents' group. She took part in a new 'Starting with Psychology' course. She then joined the community-based Introduction to Sociology Course run by QMU. She completed an Open University

course after which she secured a job at the local primary school. She has now applied to become a local Councillor, and is grateful to Lydia of PTLM for her support throughout.

LLE Family Languages

Nadia I was born in a diverse country, where it is common for people to speak multiple languages fluently. The Family French Learning Program at Loanhead library gave my daughter the opportunity to experience a new language, in a casual and friendly environment with other families.

LLE Knitting Group

Annie "Carle has helped me with patterns that I have been having problems with have also picked up a lot of good tips from the other ladies in class."

LLE Working with Employers – Developing Scotland's Young Workforce.

Live Jobs Roadshow feedback:

Emma Jones, Ernst & Young

"The feedback from the Careers Team attending the roadshows was phenomenal. I haven't heard staff enjoy a careers fair so much before, and we got a superb list of genuinely interested students."

Kerr Wishart, Aldi Stores

"I was really impressed by organisation, layout and quality of candidates involved in the event."

Lynn Brown, Aberdeen Asset Management PLC

"We were really impressed with the calibre of the students especially the two who have been put through to the next stage of our apprenticeship selection process"

Young People – Democracy in Action



Hilda – I had my plans for what I wanted to do and my LLE Worker supported me completely, going as far as to get me a role creating a history project for LLE from my internship. It was amazing and made me realise that being a teacher was not for me. And then I went through something that scared me a lot - my house was broken into and I made a lot of decisions in that aftermath when I realised that life was too short and my LLE Worker once again supported and gave me the space that I needed so that I could sort my head out. Then she decided that I needed to be pushed back into society, or at least that is how it felt to me, and she got me to attend the Midlothian Youth Platform where I have met several amazing people. She used this to restore my faith in people and I don't know if she knows how much it had helped me but I can honestly say I will never be able to express it in words.

Contact us to find out more and see what's on offer for 17/18.

Lifelong Learning and Employability

Central Support

Tel: **0131 271 3713**

Email: **lle@midlothian.gov.uk**

<http://www.facebook.com/llemidlothian>

twitter.com/LLEadult_family