

Midlothian HSCP MSG Indicators

Performance from April 2019 to December 2022, with 2020/21 MSG targets and trends

Local Intelligence Support Team (LIST),
March 2023

Data completeness

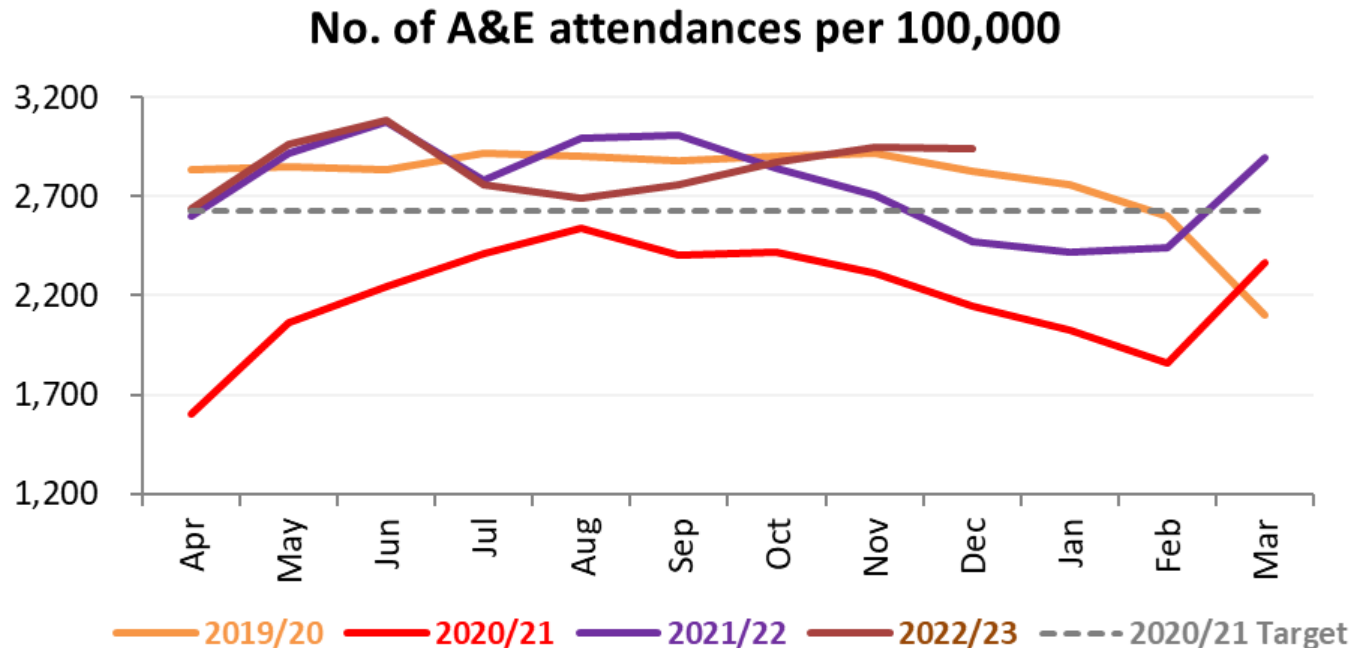
Source: MSG data release Mar-23, PHS

Indicator	Published until	Provisional until	Data completeness issues
1. A&E attendances	Dec-22	n/a	-
2. Emergency admissions	Mar-22	Dec-22	(SMR01) Nov-20 = 93%, Nov-21 = 95%, Nov-22=89%
3a. Unplanned bed days (acute)	Mar-22	Dec-22	(SMR01) Nov-20 = 93%, Nov-21 = 95%, Nov-22=89%
3b. Unplanned bed days (GLS)	n/a	Dec-22	(SMR01E) Quarters ending: Mar-22 = 98%; Jun-22 = 92%; Sep-22 = 96%; Dec-22 = 91%
3c. Unplanned bed days (MH)	Mar-21	Dec-22	(SMR04) Quarters ending: Jun-22 = 91%
4. Delayed discharges occupied bed days	Dec-22	n/a	-
5. Last 6 months of life (% in community setting)	2020/21	2021/22	-
6. Balance of care (% at home)	n/a	2020/21	-

A&E Attendances

Source: MSG data release Mar-23; data published up to Dec-22

Target = maintain	Annual	Monthly
2020/21 Target Rate (per 100,000)	31,543	2,629
2019/20 Rate (per 100,000)	33,319	2,777
2020/21 Rate (per 100,000)	26,391	2,199
2021/22 Rate (per 100,000)	33,153	2,763
2022/23 Running average (Dec)		2,851



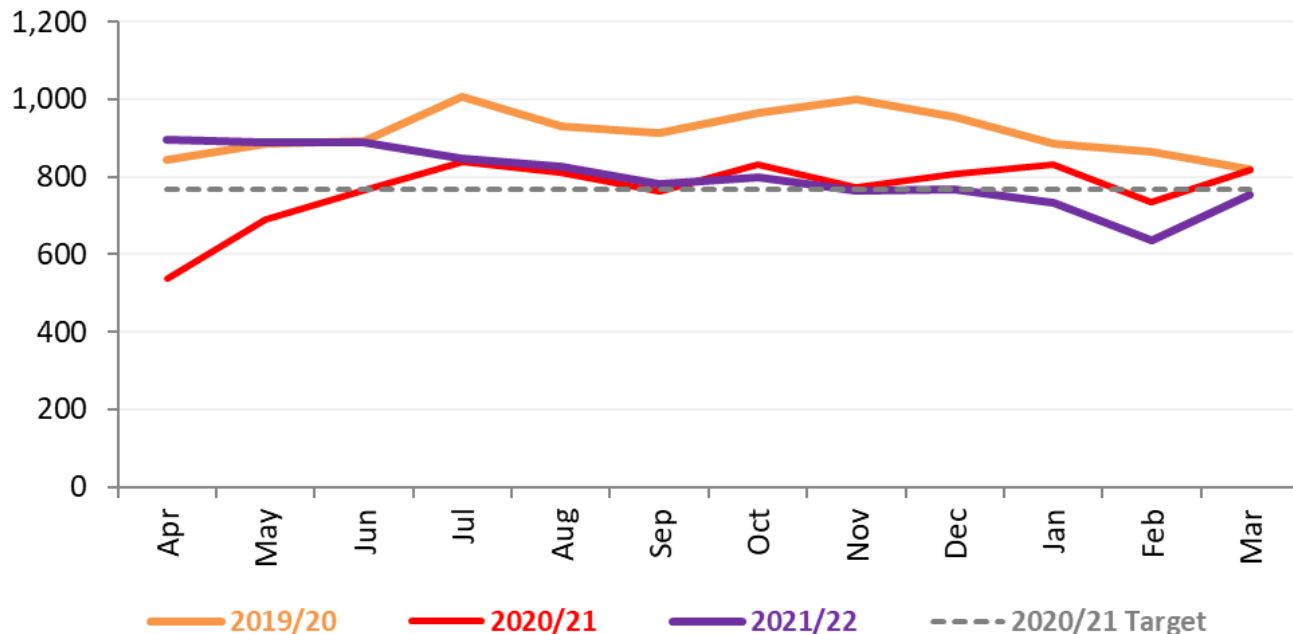
Emergency Admissions

Source: MSG data release Mar-23; data published up to Mar-22

Due to the time delay involved in data validation, there is no published data yet for 2022/23

Target = 5% decrease	Annual	Monthly
2020/21 Target Rate (per 100,000)	9,207	767
2019/20 Rate (per 100,000)	10,969	914
2020/21 Rate (per 100,000)	9,208	767
2021/22 Rate (per 100,000)	9,586	799

Number of emergency admissions per 100,000



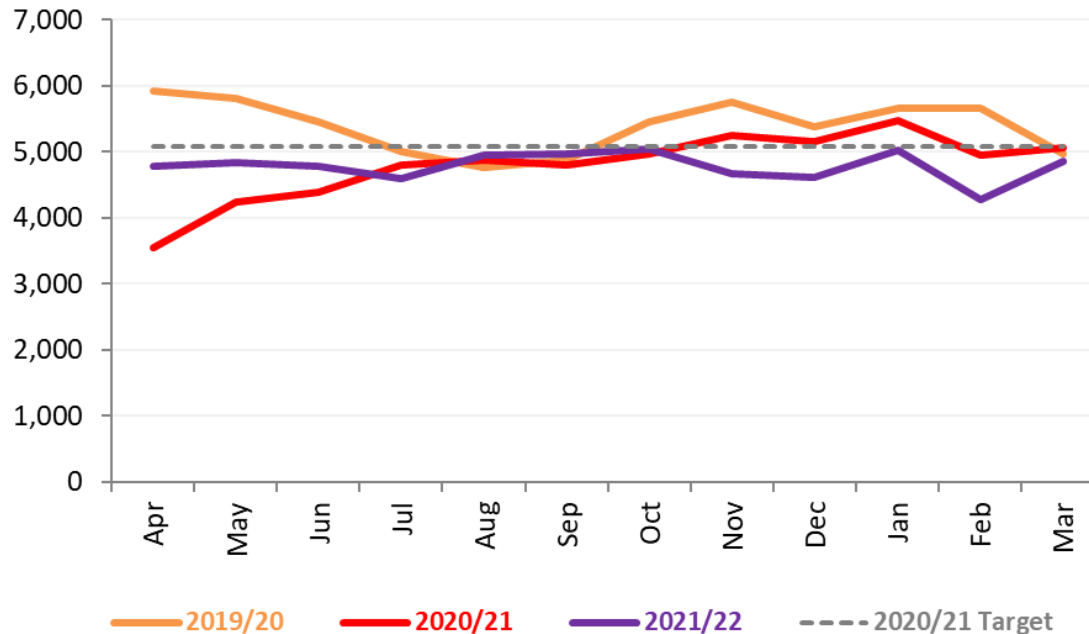
Unplanned Bed Days - Acute

Source: MSG data release Mar-23; data published up to Mar-22

Due to the time delay involved in data validation, there is no published data yet for 2022/23

Target = 10% decrease	Annual	Monthly
2020/21 Target Rate (per 100,000)	60,888	5,074
2019/20 Rate (per 100,000)	64,683	5,390
2020/21 Rate (per 100,000)	57,459	4,788
2021/22 Rate (per 100,000)	57,351	4,779

Acute unscheduled bed days per 100,000

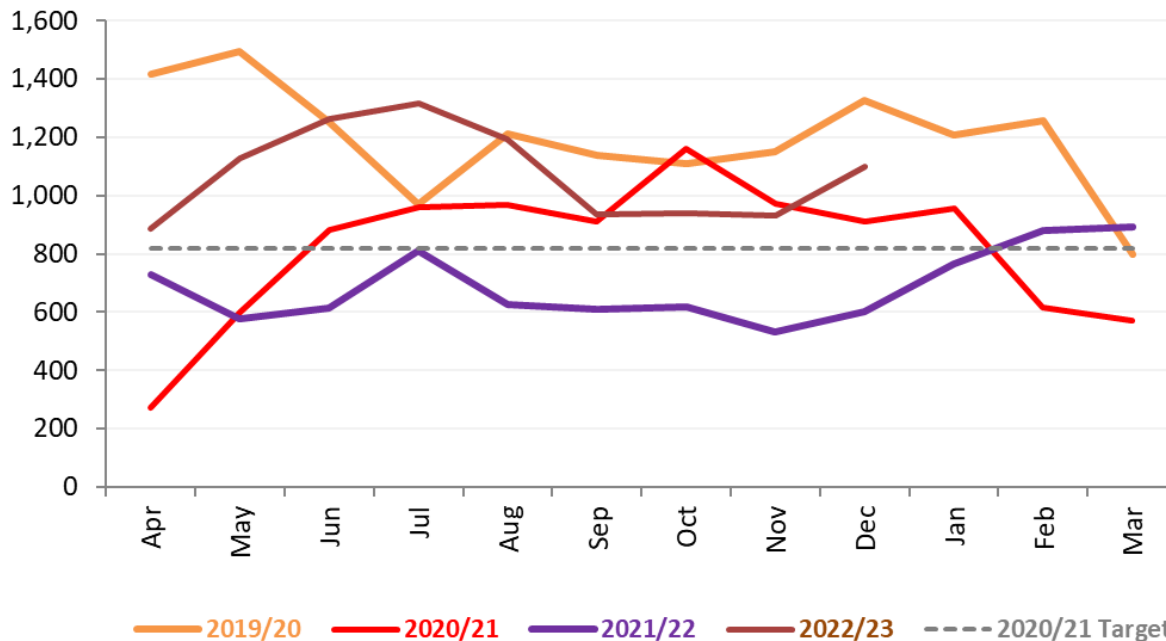


Delayed Discharges Occupied Bed Days

Source: MSG data release Mar-23; data published up to Dec-22

Target = 20% decrease	Annual	Monthly
2020/21 Target Rate (per 100,000)	9,836	820
2019/20 Rate (per 100,000)	14,336	1,195
2020/21 Rate (per 100,000)	9,779	815
2021/22 Rate (per 100,000)	8,249	687
2022/23 Running average (Dec)		1,077

Delayed discharge bed days per 100,000, all reasons (18+)



End of Life - Percentage of Last Six Months Spent in Large Hospitals

Source: MSG data release Mar-23; data published up to 2020/21

Due to the time delay involved in data validation, there is no published data yet for 2022/23

Target = decrease	Annual
2020/21 Target	<8.7%
2019/20	9.1%
2020/21	7.5%

