

Midlothian HSCP MSG Indicators

Performance from April 2019 to December 2023, with 2020/21 MSG targets and trends

Local Intelligence Support Team (LIST),
July 2024

Data Sources

2020/21 MSG Targets

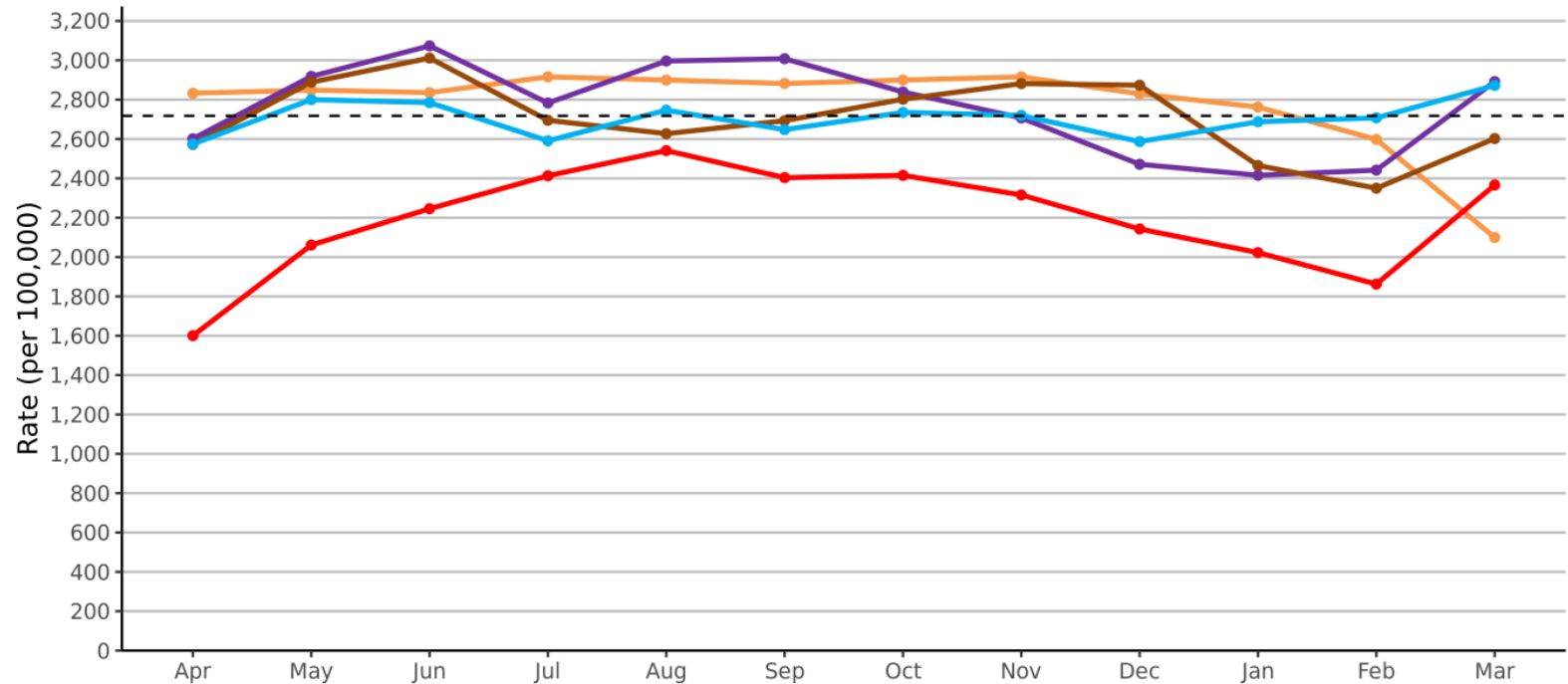
- Source: MSG data release v1.67, Jul-24; Public Health Scotland
- These are official monthly figures released by PHS and will be nationally published (some data is provisional and not yet published)
- Next data release: TBC

A&E Attendances

Source: MSG data release Jul-24; data published up to Mar-24

Year	Annual	Monthly
2020/21 Target Rate (per 100,000)	32,614	2,718
2019/20 Rate (per 100,000)	33,319	2,777
2020/21 Rate (per 100,000)	26,391	2,199
2021/22 Rate (per 100,000)	33,147	2,762
2022/23 Rate (per 100,000)	32,462	2,705
2023/24 Rate (per 100,000)	32,454	2,704

Monthly rate of A&E attendances per 100,000 people



Financial Year — 2019/20 — 2020/21 — 2021/22 — 2022/23 — 2023/24

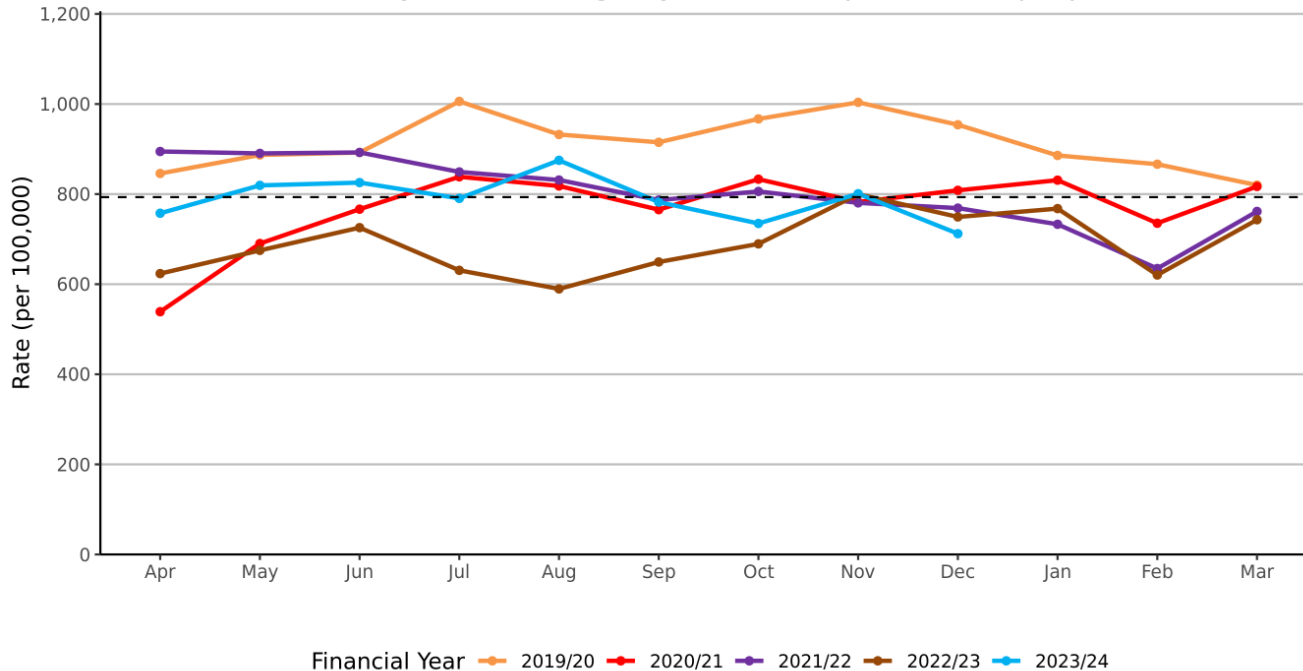
Emergency Admissions

Source: MSG data release Jul-24; data published up to Dec-23

Year	Annual	Monthly
2020/21 Target Rate (per 100,000)	9,520	793
2019/20 Rate (per 100,000)	10,974	915
2020/21 Rate (per 100,000)	9,225	769
2021/22 Rate (per 100,000)	9,629	802
2022/23 Rate (per 100,000)	8,263	689
2023/24 Running Average (Dec)		789

- The 2020/21 target was met
- The rate of emergency admissions dropped in Apr-20 due to Covid-19, but quickly returned to more typical levels – although remained lower than 2019/20 until Mar-21
- The admission rate has been close to the 2020/21 target level so far in 2023/24.

Monthly rate of emergency admissions per 100,000 people

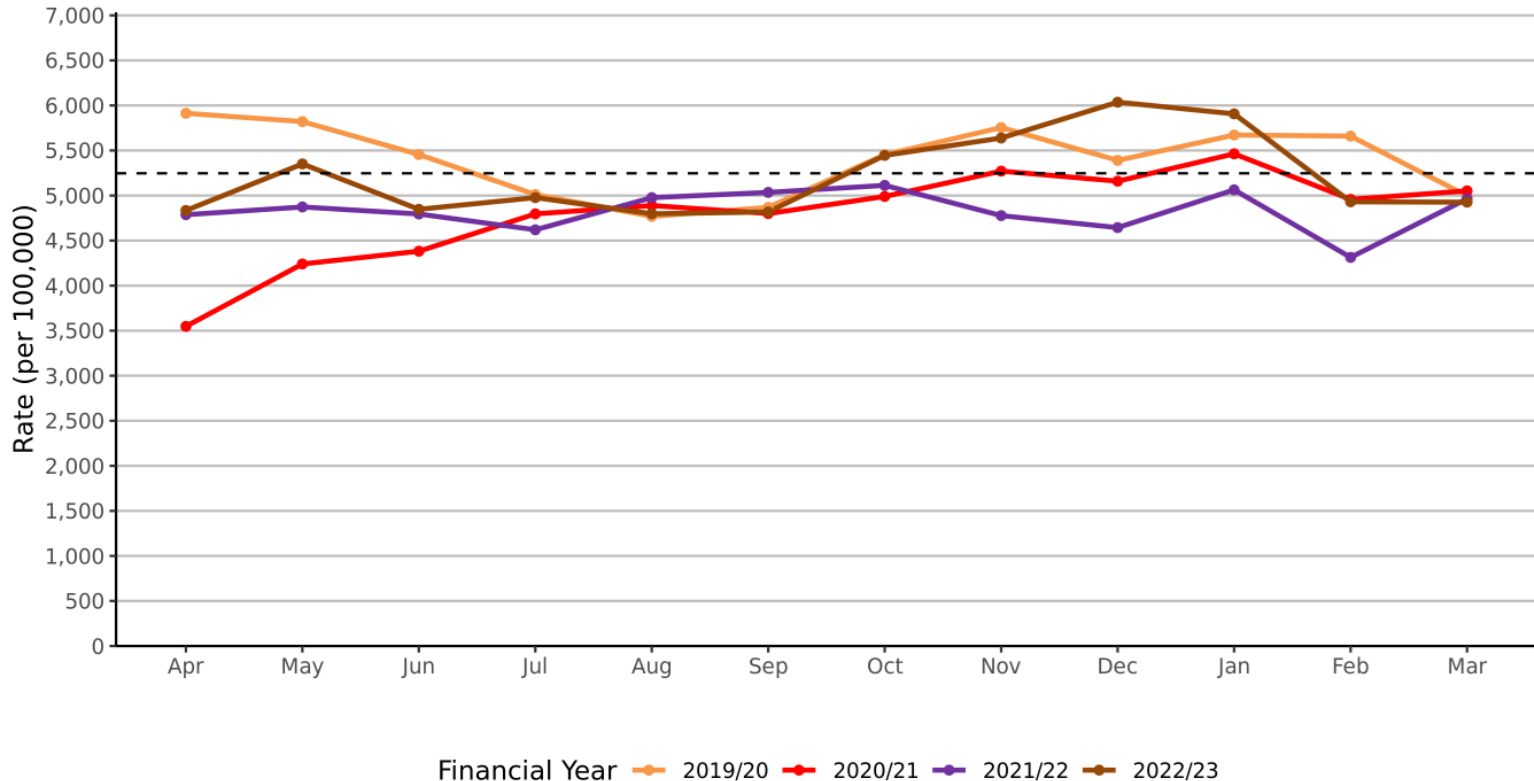


Unplanned Bed Days - Acute

Source: MSG data release Jul-24; data published up to Mar-23

Year	Annual	Monthly
2020/21 Target Rate (per 100,000)	62,963	5,247
2019/20 Rate (per 100,000)	64,764	5,397
2020/21 Rate (per 100,000)	57,549	4,796
2021/22 Rate (per 100,000)	57,963	4,830
2022/23 Rate (per 100,000)	62,509	5,209

Monthly rate of unplanned beddays (Acute) per 100,000 people

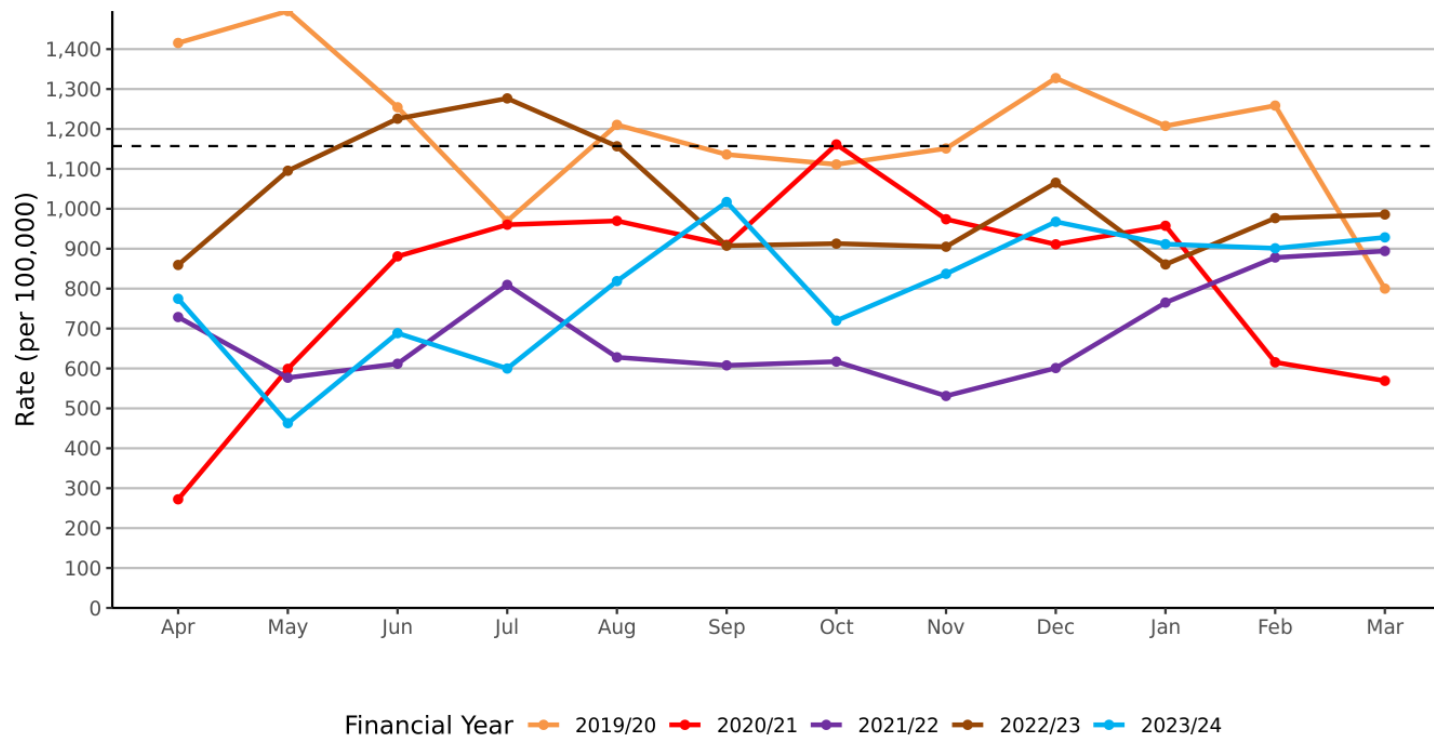


Delayed Discharges Occupied Bed Days (18+)

Source: MSG data release Jul-24; data published up to Mar-24

Year	Annual	Monthly
2020/21 Target Rate (per 100,000 18+)	13,886	1,157
2019/20 Rate (per 100,000)	14,336	1,195
2020/21 Rate (per 100,000)	9,779	815
2021/22 Rate (per 100,000)	8,249	687
2022/23 Rate (per 100,000)	12,227	1,019
2023/24 Rate (per 100,000)	9,627	802

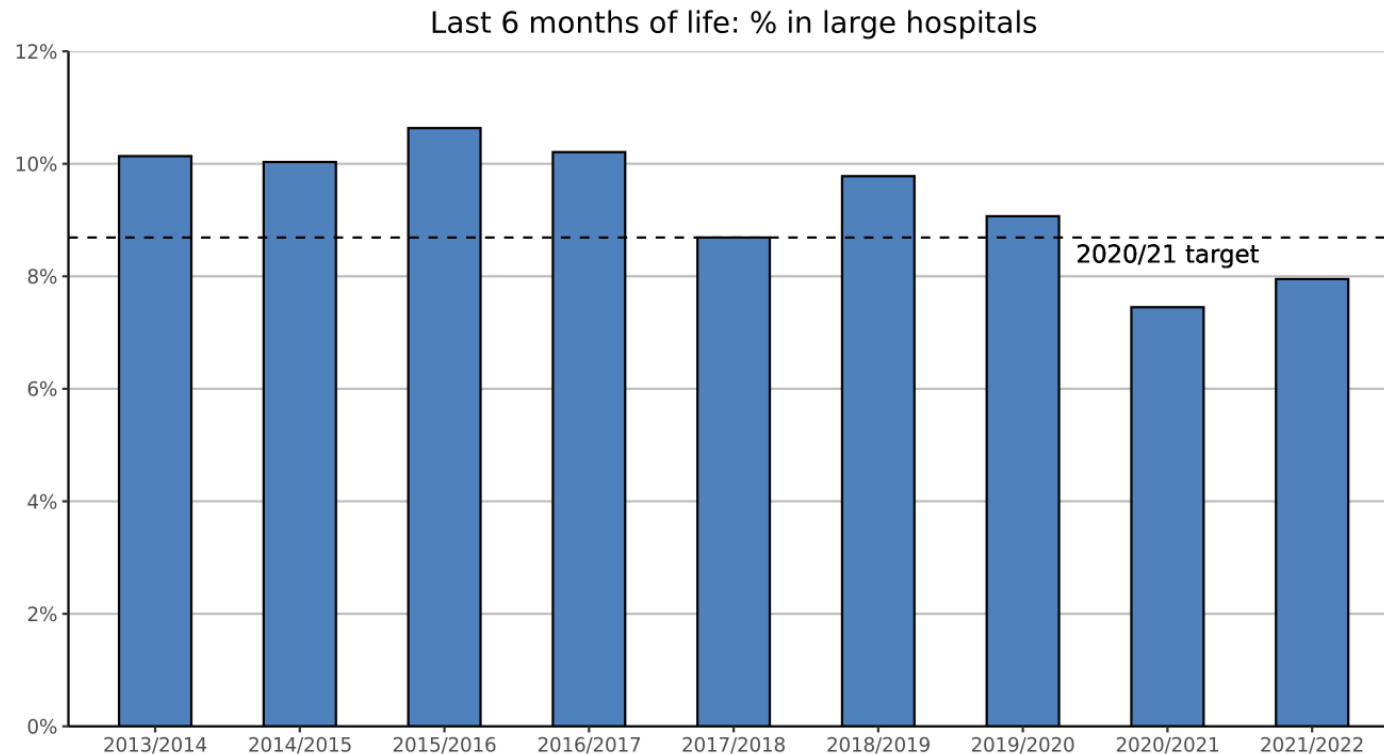
Monthly rate of delayed discharges (OBD) per 100,000 people



End of Life - Percentage of Last Six Months Spent in Large Hospitals

Source: MSG data release Jul-24; data published up to 2021/22

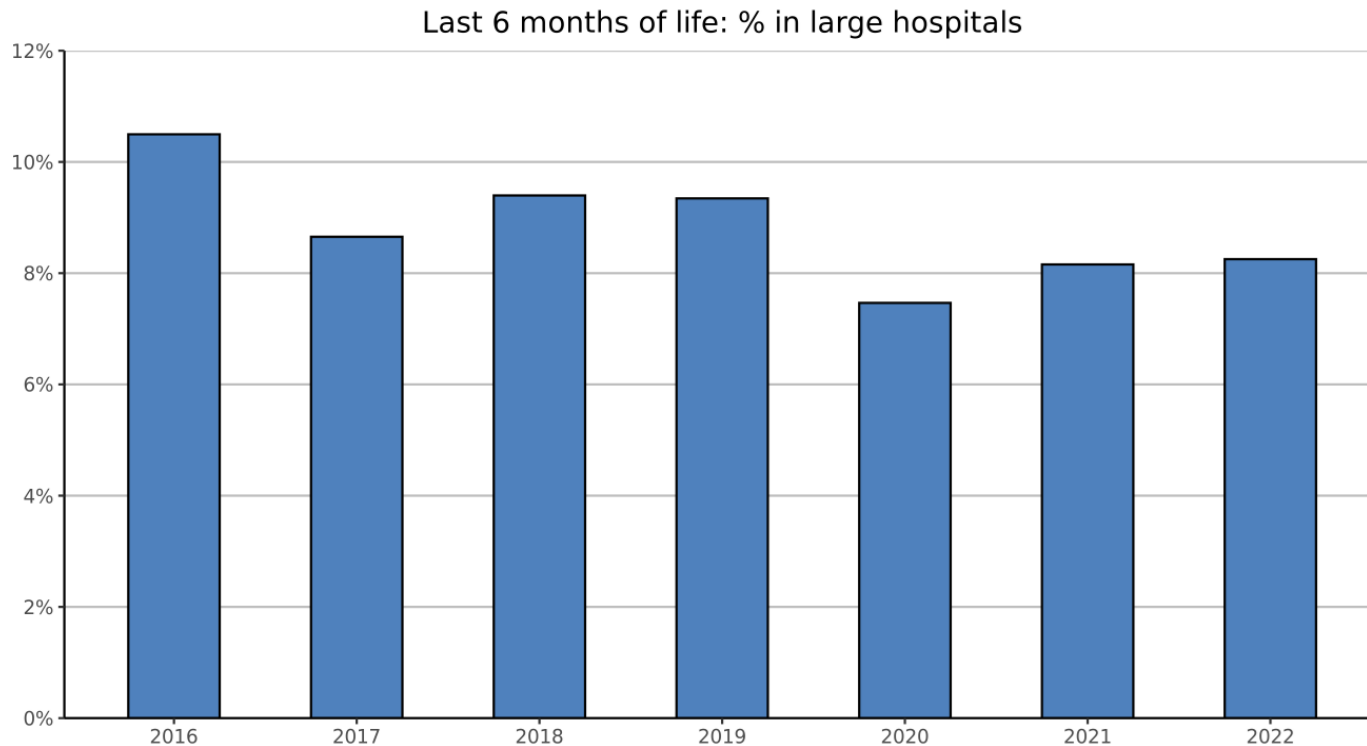
Year	Annual
2020/21 Target	<8.7%
2019/2020	9.1%
2020/2021	7.5%
2021/2022	8.0%



End of Life - Percentage of Last Six Months Spent in the Community – by calendar year

Source: MSG data release Jul-24; data published up to 2022

Year	Annual
2019	9.3%
2020	7.5%
2021	8.2%
2022	8.3%



IJB Strategic Governance Map

